



REARING CALVES

**AGRICLÉ**





# AGRICLÉ'S COMMITMENT

For more than 40 years, Agriclé has been a reference for farmers and distributors throughout Quebec, Ontario and North America. Our priority has always been to give you a peace of mind and promote animal welfare with innovative, reliable and world-renowned brands.

## **AGRICLÉ IS:**

A recognized distribution network

A wide range of quality products

A team dedicated to serving its customers

Strong relationships with our partners

More than 40 years of expertise

At Agriclé, the product reliability is crucial. Our responsibility is to offer our customers products that meet standards of quality, compliance and sustainability. We currently offer more than 3,000 quality products from European, Canadian and international leading brands.



# Trusted brands for the health and comfort of your future heifers

Setting up your nursery is at the heart of raising your calves: choosing the best products to make your life easier and following the best protocols are the keys to healthy calves.

*« The calves are much more beautiful since the setup of Agri-Plastics group nursery and Milk Bar feeders. **We've noticed between 10 and 15% increase in production at the first lactation** for heifers raised here »*

**Karine Marcoux, Domaine Phoenix Farm**



## The Milk Bar controlled flow feeding systems

- Based on a proper digestion and calf health
- Reduces coughing that can lead to pneumonia
- Reduces nutritional diarrhea
- Cross-suckling reduction
- Increase of the average daily gain (ADG)
- Better production from the first lactation



## Agri-Plastics range of hutches

- A thicker quality plastic for stronger and more durable hutches
- One of the best warranty of the industry
- Thoughtful environments for calf health and growth
- Better ergonomics for maintenance and use
- Thoughtful ventilation to optimize airflow and reduce ammonia to improve calf health and comfort
- The widest range of options on the market
- Ideal for a low-cost outdoor installation

# CONTROLLED MILK FLOW FEEDING



## The Milk Bar controlled milk flow feeding reproduces natural suckling

The calf must suckle to create the necessary compression and stimulate the teat. This leads him to drink more slowly, up to 4 or 5 minutes per liter of milk, and to produce a lot of saliva.

- This saliva has natural properties, which are the first and main defenses against infections. It creates a favorable environment in the abomasum to form a good curd and start the digestion process. Enzymes do their job by allowing optimal digestion of fat and lactose.
- Suckling stimulates the esophageal groove so that milk bypasses the rumen and goes into the abomasum.

**The result: healthy calves with a better average daily gain, which translates into a better fertility and production performance from the first lactation.**

## Resolves cross-suckling problems

A calf fed 4 liters at natural speed should take about 12 to 15 minutes to ingest. After drinking, he will be calm and go to bed (his urge to suck is satisfied). If he ingests these 4 liters in 8 minutes or less, he will spend the next 4 to 5 minutes suckling on his environment to satisfy his craving.

*«The calves salivate a lot, they are calmer after consuming the milk, they lie down quickly and sleep longer. They also consume feed earlier. I've noticed a significant reduction in sick calves: no more runny eyes or noses! I no longer inject 95% of my calves, compared to before when I injected all of them.»*

**Renée Hamel, FDL Jersey Farm**



Scan to find all the products and the latest Milk Bar updates





# Benefits of a calf's digestive health approach

## The natural suckling

When suckling on his mother, the calf creates both a positive (pushing down) and negative (suckling) pressure onto the teat.

The squeezing stimulates the cow's teat, so oxytocin is released. Oxytocin causes cells in the udder to contract and eject milk from the alveolus into the cisterns (galactophore canal).

The suckling overcomes the sphincter barrier, allowing the calf to remove milk from teat. Oxytocin does NOT cause milk flow from the teat. The teat canal must be physically opened to remove milk.



## The calf drinks slowly, up to 4 or 5 minutes of milk per liter and produce lots of saliva.

- The saliva that is produced by suckling slowly is rich in lactoferrin-lactoperoxidase, an enzyme system with antioxidant and antimicrobial properties that boost immunity and improves the protection of the calf.
- Saliva balances the pH in the abomasum, so the milk can turn into a thick curd thanks to the enzymes.
- A slow absorption of the milk allows lipase to digest fats, and the milk lactose is digested and absorbed into the bloodstream.
- The natural suckling action of using a positive and negative pressure helps activate the esophageal groove to close and form a tube, so milk bypasses the rumen and enters the abomasum.

## The digestive system

In nature, the calf drinks with his neck long and low and ingest milk at a height of about 60 to 65 cm from the ground. With the speed of milk controlled, the rumen is bypassed, and the saliva creates a favorable environment in the abomasum to form a good curd and initiate the digestion process. The enzymes do their job, enabling optimal digestion of fats and lactose.

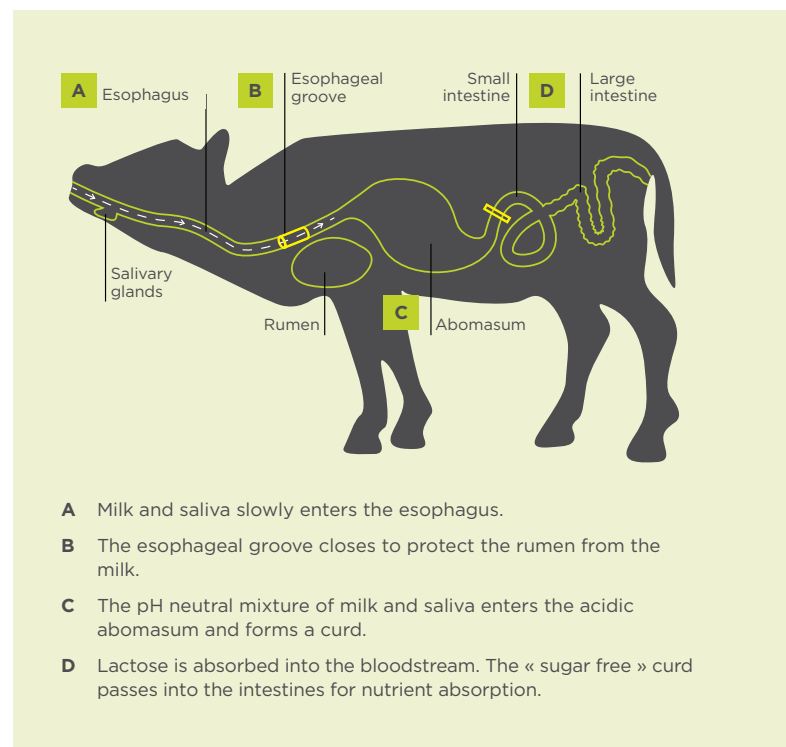
**The esophageal groove** is a curved muscle that lies at the base of the esophagus. It ensures that everything that enters the calf's mouth ends up in the right place.

### The esophageal groove and the rumen

When a calf drinks water from a trough or eats meal and grains, the esophageal groove stays relaxed and these food groups drop straight into the rumen for digestion. The overflow of milk into the rumen (rumen feed) can severely penalise the growth performance of calves. The rumen has enzymes to digest solid food, but not to digest milk. It ferments and produces lactic acid that enters the bloodstream and can cause depression, anorexia, and sometimes the loss of the animal.

### The esophageal groove and the abomasum

When a calf suckles, the esophageal groove closes and forms a small tube to direct the milk past the rumen and into the abomasum for digestion. Too much milk can cause it to overflow, allowing milk to enter the rumen.



*«It is vital to the health of the calf that all the milk goes into the abomasum. If milk enters the rumen due to fast feeding, either with a teat with inner valve or a bucket, it can cause gut ache, as the enzymes in the rumen cannot digest milk.»*

**Dr Jim Quigley (Source)**



# Cross-suckling: how to fix it

Cross-suckling is when calves suckle on each other or their surroundings after feeding. This undesirable behavior may go unnoticed (calves left in the headlocks or no visits after feeding), but must be identified as it can cause short term infections and long-term damage. If you watch your calves after feeding, you will see that the length of time they spend cross-suckling is directly linked to the speed at which they drink.

## Why it's a problem?

Short term problems like navel infections are a nuisance and take time and cost to treat. For long-term damage, cross-suckling on the juvenile udder removes the keratin plug and leaves the developing teat canal open to infections. **Cross-suckling is strongly linked to mastitis and blind quarters in first lactation heifers.**

A calf fed 4 litres at natural speed should take around 12 to 15 minutes to drink the entire ration. After drinking, he will be quiet and settled. If he drinks faster (less than 8 minutes) he will cross-suckle around him to satisfied the natural suckling urge.

*«Calves suckling on each other can affect the development of the juvenile udder. This, in conjunction with the transmission of mastitis pathogens, is prone to lead to heifer mastitis»*

**Schalm (Source)**

## Lactose absorption and nutritional diarrhea

Nutritional diarrhea is not as serious as viral diarrhea, but it takes time to be treated and has long-term consequences. It can be linked to two major causes:

- Poor digestion;
- Too much stress (irregular feeding, sudden changes in milk replacer concentration and/or poor-quality milk replacer and unexpected weather changes).

**Digestive stress is a key factor.** If the pH in the abomasum is not balanced and the acid secretion is reduced, then the ability of the milk to clot is compromised as is the digestion of milk protein. Inadequate clotting allows excess sugar (lactose) to enter the intestines and produce a nutrient source for pathogens such as E.Coli who's numbers multiply rapidly when in contact with raw milk or lactose. This is a leading cause of nutritional diarrhea in young calves.

*«During the trial, it was observed that group-housed calves fed the faster flow teats had a much greater incidence of hyperactivity immediately post feeding and were more likely to engage in non-nutritive suckling of each other's body parts (including muzzle, navel and udder).»*

**Journal of Applied Animal Nutrition (Source)**



Calves fed with Milk Bar teats had healthy, undamaged teats and the keratin plug remains intact to protect the teat canal.



Calves fed from a faster flow teat cross-suckled vigorously and damages due to cross-suckling and loss of keratin plug was common.

*«Suckling the immature udder can lead to premature removal of the keratin plug, which protects the individual teats from infection, especially in heifers coming into first milk, as well as navel and skin infections»*

**Jensen and Budde (Source)**

## Long term impacts

Aside from the cost and added workload of treating calves with nutritional diarrhea, studies have shown that calves who suffer from nutritional diarrhea pre weaning have a reduced Average Daily Gain (ADG) which can impact future conception. Further studies have shown that nutritional diarrhea pre weaning has a negative impact on first lactation milk production.

## Address the cause

Saliva production helps to balance the pH to further ease stress on the digestive system. **Feeding the calf at a slow, natural speed will maximise saliva production and ultimately reduce your workload.** Alongside reducing environmental stress, improving digestibility and lactose absorption is key in reducing nutritional diarrhea. We know from studies that a controlled flow of milk into the calf has a positive effect on digestion by promoting good clotting and improving lactose absorption.



# Health for better performance

The Average Daily Gain (ADG) is the number of grams of weight gain per day. A good ADG has positive outcomes such as better conception rates and increased milk production in first lactation.

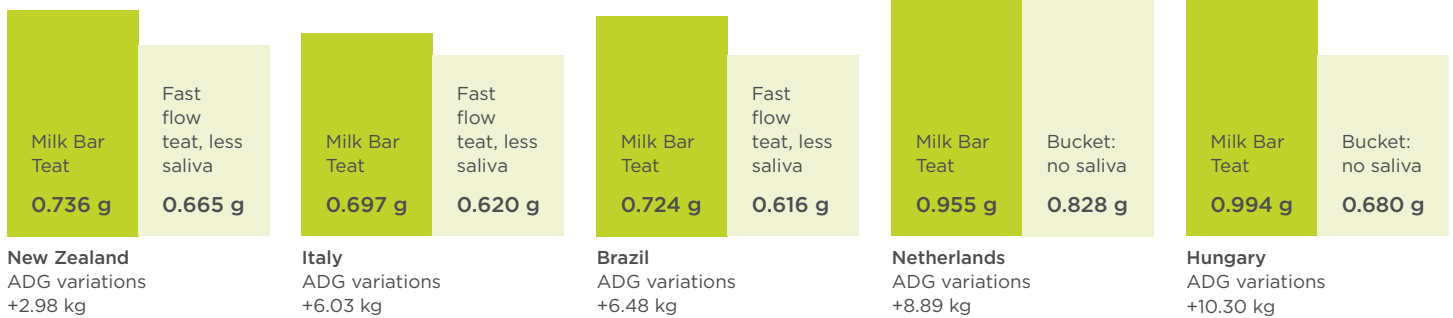
Improving lactose absorption is key for calves to fully benefit from good nutrition programs. By drinking slowly, lactose is released from the milk curd in the abomasum. It is broken down to glucose and galactose and these are absorbed into the bloodstream to form the major energy sources for young calves

The use of a fast flow feeding system (fast flow teats or bucket) reduces the lactose absorption and calves do not receive the full benefit of their feed. **By controlling the flow of milk, the digestive system can function perfectly to ensure maximum utilization of feed and optimum growth.**



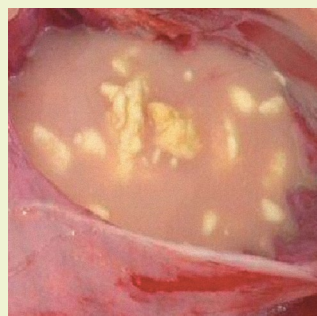
## Impact of saliva production on the ADG

Journal of Applied Animal Nutrition (Source)



### GROUP 1 (MILK BAR TEAT)

Healthy abomasum with an excellent curdling. Only 3 mg/g of lactose remained two hours after feeding, indicating more efficient absorption into the bloodstream.



### GROUP 2 (FAST FLOW TEAT)

Inadequate and insufficient curdling in abomasum. High lactose levels of 12 mg/g remained in the abomasum and high concentrates in the intestine and faeces.

«Diarrhea can usually be traced back to a failure of adequate milk digestion in the abomasum. Nutritional diarrhea is simply the end result of an oversupply of lactose in the intestines, caused by milk moving too rapidly out of the abomasum, so it cannot be broken down quickly enough. Nutritional diarrhea often progress to infectious diarrhea. Pathogens use excess lactose as a nutrient source to increase in numbers.»

**Victoria Dept. of Primary Industries (Source)**

«The slow release teat system may reduce diarrhea and other digestive problems in young calves [...], due to increased ideal digestion of nutrients, preventing undigested nutrient flow to the hind gut»

**Journal of Applied Animal Nutrition (Source)**

Images and stats taken from research published in the Journal of Applied Animal Nutrition (Source)



# Milk Bar teats are made with 100% natural rubber

From the start, it's important to give new teats to the young calves. Over time, the rubber softens, increasing the flow rate to match the evolution of their digestive system which can handle a faster flow as weaning approaches. However, a fast flow feeding can lead to cross-suckling problems and nutritional diarrhea.

**For better results: a teat = a calf, a weaning**

**Install your teat at 24 inches (60 cm) from the ground**

## ORIGINAL TEAT

Designed for Milk Bar feeders

- Without inner valve to limit bacteria proliferation.
- The yellow teat is made from a softer rubber to help new-born calf on the first 2-3 days.

MBCT-C	Yellow training teat (sold in pack of 10)
MBCT	Yellow training teat with round hole (sold in pack of 10)
MBT	Black regular teat (sold in pack of 10)
MBT50	Black regular teat (sold in pack of 50)
MBT-R	Black regular teat with round hole for Ad Lib feeder



**Start with a yellow training teat to make it easier to learn during the first few feedings, before moving on to the black teat.**

## REVOLUTION TEAT

Fits on all Snap On type feeding bottles

- The teats features 5 circular slits to control the flow of milk, no matter how the bottle is placed.

MBTREV-J	Revolution training teat
MBTREV	Revolution regular teat
AGRI-1074	4 liters Snap On type bottle (teat sold separately)





Get the benefits of Milk Bar with a compatible teat, no matter which feeder system you use.



**AUTOMATIC FEEDER TEAT**

Suitable for all automatic calf feeders with a teat hole of 1.5" (38 mm).

- Change the teat every 700 liters or so, and plan for the arrival of young calves at the ACF on the day of its replacement.
- Side wings allow you to check the teat alignment in the ACF.

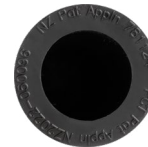
MBAT	ACF teat
------	----------

- Easy alignment thanks to the 360 round shape.
- Change the teat after 1,200 and 1,500 liters.

MBTREVA	Revolution teat for ACF
---------	-------------------------



MBAT



MBTREVA



MBCBGMT-J



MBCBGMT

Fits on buckets with 38 mm hole



MBCBGMT-CBC

**CALF BUDDY TEAT AND CONNECTOR**

Valve-free teat and connector kit to fit any bucket with a 1,5" (38 mm) hole.

MBCBGMT-J	Calf Buddy training teat
-----------	--------------------------

MBCBGMT	Calf Buddy teat
---------	-----------------

MBCBGMT-CBC	Connector
-------------	-----------



Use a chlorine-free cleanser at least 2 times a week or according to your hygiene protocol. The use of chlorinated products reduces the life of the teats by 60%.



**SINGLE FEEDERS**

Feeding calves with a one teat feeder gives the operator a great control over the consumption of milk, water and intake of calf starter.



MB1



MB1-4L



MBADJ



**FEEDER WITH MOLDED HOOKS**

- Molded hooks that fits onto 1" bars.
- Perfect for a calf in the development phase.

MB1                      3.2L feeder with one teat

MB1-4L                4L feeder with one teat

The 4 liters model has a clip-on system that makes it easy to change the teat and a self-locking latch that prevents the feeder from unhooking. The Adjustalock support, which lock and secure the feeder, fits onto horizontal or vertical bars while adjusting the position for optimal teat height (between 24 and 26" from the ground).

MBADJ                Adjustalock support



MB1EL-8L



**FEEDER WITH EZI LOCK HOOKS**

Can be hung either outside or inside the pen with Ezi Lock hooks (reversible feeder). Calves cannot unhook the feeder from its support.

Dimensions: 11 x 7 x 16" (18 x 28 x 41 cm)

Weight: 1.5 kg (3.3 lbs)

MB1EL-8L            8L feeder with one teat

MB1EL-8L-LID      Lid



**BUCKETS**

- With a 9L capacity, they are semi-transparent to see how much milk is in the bucket.
- Gradation marks at each liter.
- Two slides for standard hooks (sold separately).

MBECO9L	EcoBucket with original teat
MBECO9L-C	EcoBucket lid
MBCBGMF1	Calf Buddy bucket with teat and connector (lid sold separately)
MBCBGMFIL	Calf Buddy lid
300.0054	Plastic mounting bracket
300.0057	Metal mounting bracket



MBECO9L



MBCBGMF1

**VITALITY BOTTLE**

The Vitality system offers a color-coded protocol to facilitate management. The teat fits into a colored clip that clicks onto the bottle cap. By combining the color of the clip with the color of the tag that will be attached to the hutch or pen, you will be sure that the calf is drinking with the right teat, from the beginning to weaning. And if you have a calf that is taking medication, it will be easy for you to identify it with a color code.

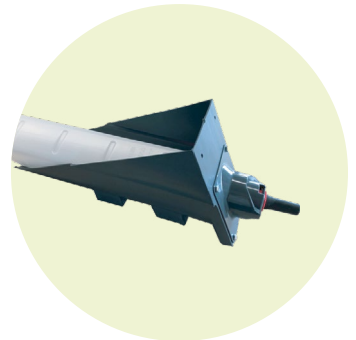
**The Vitality bottle system comes in a box of 5 units:**

- 5 bottles and 5 caps
- 5 fixing brackets and 5 chutes
- 1 yellow training teat and 10 regular black teat
- 10 clips and tags (one of each color)

MBVP	Kit of 3L bottles
MBVP-4L	Kit of 4L bottles



MBVP



**COLOSTRUM TRAINING BOTTLE**

- Ideal for the first 3 to 4 meals.

MBCB	Training bottle with air valve
------	--------------------------------



MBCB

Also use the Vitality color tag system for your feeders!





## GROUP FEEDERS

### GROUP FEEDERS

	Description	Capacity	Dimensions	Weight	Hooks	Lid (sold separately)
MB5	5 teats feeder with gradients marked at 5L	15L (3.3 gal)	12 x 12 x 14" (30 x 30 x 36 cm)	2 kg (4.4 lbs)	Molded that fits onto 1" bars (25 mm)	MB5-LID
MB6	6 teats feeder	36L (8 gal)	28 x 12 x 16" (70 x 30 x 40 cm)	3 kg (6.6 lbs)	Ezi Lock (MB-ELHS)	MB6-LID
MB8	8 teats feeder	60L (13.2 gal)	33 x 18 x 17" (85 x 46 x 43 cm)	5 kg (11 lbs)	Ezi Lock (MB-ELHS)	MB10-LID
MB10	10 teats feeder	60L (13.2 gal)	33 x 18 x 17" (85 x 46 x 43 cm)	5 kg (11 lbs)	Ezi Lock (MB-ELHS)	MB10-LID
MB12	12 teats feeder	90L (20 gal)	47 x 17 x 18" (120 x 43 x 46 cm)	8 kg (18 lbs)	4 aluminium hooks	N/A
MB13	13 teats feeder	90L (20 gal)	78 x 8 x 13" (196 x 20 x 33 cm)	10 kg (22 lbs)	4 aluminium hooks	N/A
MB20	20 teats feeder	120 liters (26.4 gal)	35" diam. x 35" high (90 x 90 cm)	12 kg (26 lbs)	N/A	MB20-LID*

\*Only on special order



MB5



MB6



MB8



MB10



Use a blanking plug to seal an unused teat space (MBB)



MB12



MB13



The 20-teats feeder is screwed to the base and the shape of this one provides great stability.

- Inside or outside use.
- In windy conditions, it is recommended to drill holes in the base and fix it to the ground.



MB20

«At 32 days, the calves are moved to larger pens and milk is given only in the morning with MB20 and MB10 feeders. Choosing Milk Bar, a system that is not expensive, is a win for animal health and weight gain. I wouldn't go back!»

**Luc Lachapelle, Lachtrep Farm**



**COMPARTMENT GROUP FEEDERS**

The compartments contain 2.5 litres, are easy to clean and have Ezi Lock hooks.

	Description	Capacity	Dimensions	Weight	Lid (sold separately)
MB2C	2 compartments feeder	5L (1 gal)	16 x 10 x 16" (41 x 25 x 41 cm)	2 kg (4.4 lbs)	MB2C-LID
MB3C	3 compartments feeder	7,5L (1.5 gal)	20 x 10 x 16" (51 x 25 x 41 cm)	3 kg (6.6 lbs)	MB3C-LID
MB4C	4 compartments feeder	10L (2 gal)	26 x 12 x 16" (66 x 30 x 40 cm)	3,5 kg (7.7 lbs)	MB4C-LID
MB5C	5 compartments feeder	12,5L (2.5 gal)	33 x 11 x 15" (85 x 28 x 38 cm)	4,5 kg (9.9 lbs)	MB5C-LID
MB10C	10 compartments feeder (aluminium hooks)	25L (5.5 gal)	44 x 19 x 17" (113 x 48 x 43 cm)	11 kg (24 lbs)	N/A



MB2C



MB3C



MB4C



MB5C



MB10C



Large range of lids available





**SPECIALTY GROUP FEEDERS**



MB4ADLIB

**AD LIB SELF-SERVICE FEEDER**

Here's a different way to feed calves until weaning with the Ad Lib self-service feeder.

The Ad Lib self-service feeder has 4 teats, with a 36L capacity, and comes with:

- Blanking plugs
- Tubes
- The connectors
- A lid

MB4ADLIB Ad Lib feeder with 4 teats



**How to use**

1. Start the young calves with round-hole new teats (MBT-R) installed at the bottom of the feeder.
2. After 2 to 3 weeks, teats are softer and calves drink faster. It's now time to transfer the teats to the top holes and to connect tubes to the teats (use blanking plugs to seal the bottom holes).
3. After weaning, clean plugs and tubes and you're ready for the next group.



MBCBGMF2

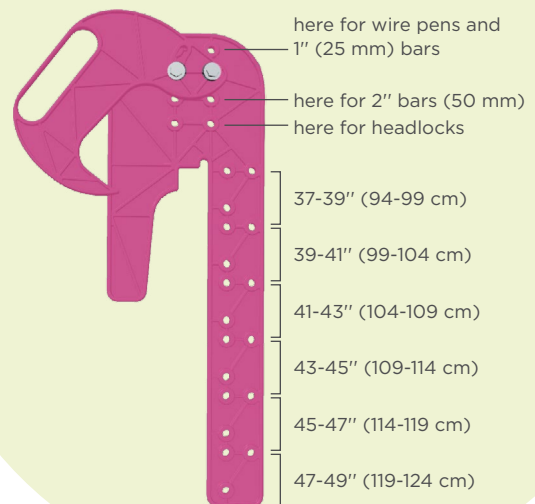
MBCBGMF5

**CALF BUDDY FEEDER**

This feeder comes with a height-adjustable hook system, so calves suckle at the perfect height whether they are installed on rails, wire pens, 1" steel bars, 2" tubes or headlocks gates.

MBCBGMF2	2 teats feeder 16 x 12 x 15" / 6 lbs / 20 liters
MBCBGMF2L	Lid
MBCBGMF5	5 teats feeder 30 x 15 x 16" / 10 lbs / 50 liters
MBCBGMF5L	Lid

**Swivel handle locks  
feeders in place:**

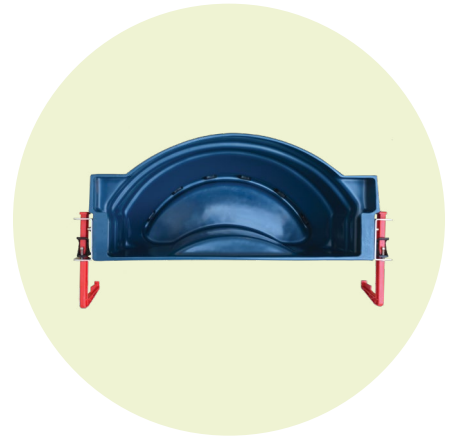




MB1-ULTRA



MB6-ULTRA



**NEW PRODUCT**

**ULTRA FEEDER**

The new Milk Bar Ultra range is carefully crafted with antimicrobial materials approved by the FDA and for food contact.

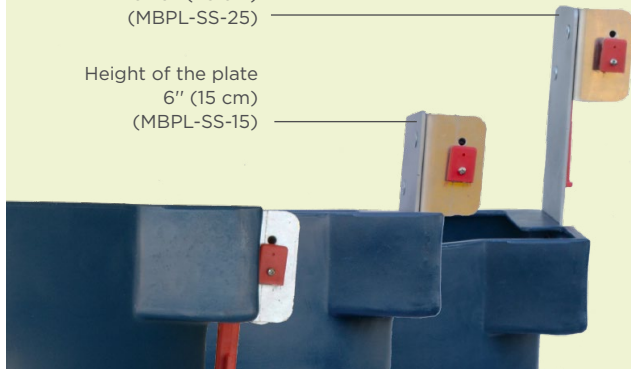
The material has a long-lasting antimicrobial effect: the additions of silver powder inhibit the growth of MRSA (Methicillin-Resistant Staphylococcus), S.Aureus and E.Coli by up to 99.9%.

MB1EL-ULTRA	ULTRA 1 teat feeder 8L
MB6-ULTRA	ULTRA 6 teats feeder 36L
MBPL-SS-25	Adjustable plate up to 9.75" (25 cm)
MBPL-SS-15	Adjustable plate up to 6" (15 cm)

Unlike other feeders, Ezi Lock hooks are mounted externally on a stainless steel frame. The height of the feeders can be adjusted by adding an optional plate. This allows you to hang and lock the feeder at the desired height.

Height of the plate  
9.75" (25 cm)  
(MBPL-SS-25)

Height of the plate  
6" (15 cm)  
(MBPL-SS-15)





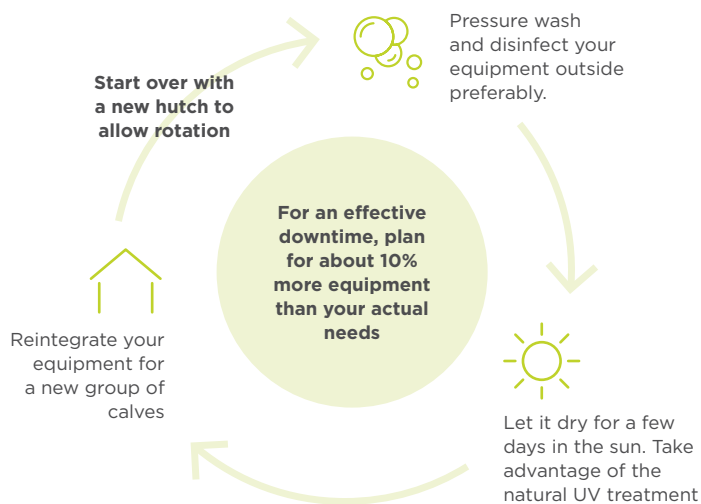
# CALF HOUSING

## Accessible options

There is no magic solution: calf disease prevention requires a strict hygiene protocol as well as good management of feeding.



### Simple cleaning steps



« The calves' physical condition and development have significantly improved since being housed in outdoor group pens - it shows in their bone structure and health. In addition, cleaning the plastic hutch it's easy as a pie! »

**Karine Marcoux,  
Domaine Phoenix Farm**



# Settling outside

**Simple, efficient and ultra cost-effective solution**

Why try to reproduce the outside inside?  
Enjoy the natural benefits of the outdoors.

No major ventilation to manage

Natural light

Sanitation by UV rays from the sun

Better management of cleaning, parasites and bacteria

**Several nordic regions have adopted outdoor nurseries, and the results are a resounding success: even at -25°C, the calves run around in circles in the fenced areas!**



Small, practical additions will make outdoor work enjoyable but, above all, safe and comfortable for your calves.

# Optimizing indoor hygiene

For indoor buildings already built: choose modular pens, easy to transport and designed with non-porous material that is resistant to even the largest cleaning agents.

Removable pens with a raised floor allow complete and faster cleaning.

The layout of the pens must be flexible to accommodate the constantly changing number of calves to be housed.

Modular layouts can be adapted to each stage of the calf's life, without having to rethink or rebuild everything.

Unattached pens allow cleaning underneath equipment, which is a conducive place for bacteria development.



Thanks to the raised floor, animals avoid direct contact on concrete, which absorbs bacteria.



# Agri-Plastics: the Calf Housing Specialist

	 <b>P.20</b>	 <b>P.21</b>	 <b>P.22</b>
	<b>STARTER PEN</b>	<b>FLEX-HUTCH</b>	<b>FLEX-PEN</b>
<b>Part number</b>	AGRI-6000	2 compartments (AGRI-8002) or 3 compartments (AGRI-8001)	Side panels (AGRI-7105, 7106 or 7107)  Front/Rear metal <b>Open Air Flex-Pen</b> (AGRI-7127) (AGRI-7128) Front/Rear plastic <b>Ultra Flex-Pen</b> (AGRI-7108) (AGRI-7110)
<b>Type of use</b>	Start	Start	Individual and group
<b>Installation</b>	Indoor	Indoor and outdoor	Indoor
<b>Ideal for</b>	Newborn or sick calves to be isolated	Quickly make a pen for 2 to 3, with minimum installation	To set up quickly individual or group pens. Modular concept!
<b>Number and age of calves</b>	1 calf, from 0 to 10 days	2 to 3 calves, from 0 to 8 weeks	1 calf per door, from 0 to 12 weeks
<b>Outdoor fencing system</b>			
<b>Floor or ground installation</b>	Slatted floor (AGRI-6001) with wheels (AGRI-6004) or legs (AGRI-6003)	Slatted floor (AGRI-8027) Dryzone (AGRI-8009) or (AGRI-8008)	Dryzone (AGRI-8009) or (AGRI-8008)



The polyethylene used in our hutches is a plastic that is highly resistant to temperature variations, UV rays, impacts and chemicals, including hydrogen peroxide used to disinfect surfaces contaminated with cryptosporidiosis.

 <p><b>P.23</b></p> <p><b>DELUXE HUTCH</b> (SL and EXL models)</p>	 <p><b>P.24</b></p> <p><b>DUAL XL HUTCH</b></p>	 <p><b>P.25</b></p> <p><b>SUPREME BUDDY HUTCH</b></p>	 <p><b>P.26</b></p> <p><b>GROUP HUTCH</b></p>
<p>SL Model (AGRI-2016) EXL Model (AGRI-1045) EXL Model is ideal for bigger calves like Holsteins</p>	<p>AGRI-1047</p>	<p>AGRI-4060</p>	<p>AGRI-4033</p>
<p>Individual</p>	<p>Group</p>	<p>Group</p>	<p>Group</p>
<p>Outdoor</p>	<p>Outdoor</p>	<p>Outdoor</p>	<p>Outdoor</p>
<p>Agri-Plastics' biggest seller, this is a perfect basic model to configure according to your needs</p>	<p>The best solution to paired calves</p>	<p>Best turnkey option with accessories</p>	<p>Basic model for people looking for more personalization</p>
<p>SL: 1 calf from 0 to 10 weeks EXL: 1 calf from 0 to 12 weeks</p>	<p>2 calves, from 0 to 8 weeks</p>	<p>2 calves, from 0 to 14 weeks</p>	<p>2 to 6 calves, depending the age, up to 20 weeks</p>
<p>Wire fence (AGRI-2001) or Supreme fence (AGRI-1800 and 1900) and hardware (AGRI-2036)</p>	<p>Wire fence (AGRI-2012D) or Supreme fence (AGRI-1700)</p>	<p>Transition pen Standard (AGRI-1033F) XL (AGRI-1034F) With wheels (AGRI-4036)</p>	<p>Transition pen Standard (AGRI-1033F) XL (AGRI-1034F) With wheels (AGRI-4036)</p>
<p>Directly on the ground</p>	<p>Directly on the ground</p>	<p>Directly on the ground</p>	<p>Directly on the ground</p>
<p><b>PRO ADVICE</b> Place 2 hutches side by side helps socialization</p>	<p><b>BE PROACTIVE!</b> According to the National Farm Animal Care Council's code of practice, from April 1st 2031, calves that are healthy, developing well and compatible must be housed in pairs or groups from 4 weeks of age.</p>		



## STARTER PEN

### STARTER PEN

Starter Pen made of sturdy polyethylene and designed for a short period of use, before placing calves in a hutch, indoor pen, group hutch or robotic feeding area.

1 calf

Up to 10 days

10-year warranty

#### Dimensions

Outside	40 x 51.5 x 42.5"	(102 x 131 x 108 cm)
Inside	34.5 x 47.25 x 42"	(88 x 120 x 106 cm)
Slatted floor	42 x 55 x 9.25"	(106 x 140 x 23 cm)

#### Included features

**A** Two pails and holders

**B** Two rotary rear vents

Assembly hardware



### SET UP YOUR PEN

#### Installation types

AGRI-6000	Basic, directly on the ground (front metal door included)
AGRI-6001	On slatted floor (sold separately from the pen)
AGRI-6003	4 legs set for an optimal drainage (sold separately)
AGRI-6004	4 wheels set (sold separately)

#### Feeding options (sold separately)

AGRI-2003	Plastic bottle holder
AGRI-7024	Metal bottle holder
AGRI-1074	4L bottle
MBECO9L	Milk Bar EcoBucket
MBCBGMF1	Milk Bar Calf Buddy feeder
AGRI-1049H	9L pail
AGRI-6005	Pail holder
AGRI-1067	Starter bowl

#### More options (sold separately)

AGRI-6009	Heat lamp holder (lamp not included)
AGRI-6002	Connecting bracket for two pens
AGRI-6000HW	Additional pen hardware

The slatted floor helps for good air circulation and the ease of raising the pen simplifies the task of cleaning.



AGRI-6001 + AGRI-6003

AGRI-6001 + AGRI-6004

See the full list of accessories to optimize your calf housing on page 29

**FLEX-HUTCH**

The Flex-Hutch\* can be placed directly on the ground or an elevated slatted floor to optimize drainage and improve efficiencies during chore time. The sturdy plastic construction is easier and less expensive to maintain than wooden hutches, while lasting up to four times as long, saving you time and money. Ideal for housing male calves off the farm or for sale. Excellent biosecurity option to prevent possible contamination.

2 to 3 calves

Up to 8 weeks

10-year warranty

**Dimensions**

Outside	96 x 72 x 52"	(244 x 183 x 132 cm)
Inside, two units	46 x 68 x 49"	(117 x 173 x 125 cm)
Inside, three units	30 x 68 x 49"	(76 x 173 x 125 cm)

**Included features**

- A** Roof opens and closes for maximum airflow and for protection if needed (hardware included).
- B** Rear ventilation by a hinged cover that opens and closes in a single motion.
- C** Galvanized metal front doors.
- D** Wire bottle holders (AGRI-7024).
- E** Pail and holders (2 by units).
- F** Compatible with Dryzone slatted floor for an optimal liquid drainage and airflow (see page 27).

**SET UP YOUR HUTCH**

**Indoor setup**

Included : 2 pails (AGRI-1049) and holders (AGRI-6005)

AGRI-8002	Hutch with 2 compartments
AGRI-8003	Hutch with 3 compartments

**Floor types (sold separately)**

AGRI-8027	Slatted floor with legs
AGRI-8009	8 ft Dryzone slatted floor (see page 27)
AGRI-8008	4 ft Dryzone slatted floor (see page 27)

**Feeding options (sold separately)**

AGRI-1067	Starter bowl
AGRI-7024	Metal bottle holder
AGRI-7025	Galvanized steel hay rack
AGRI-1074	4L bottle
AGRI-2444	Universal hanging grain feeder
MBCBGMF1	Milk Bar Calf Buddy feeder
MBECO9L	Milk Bar EcoBucket



\*Patent

AGRI-8002

See the full list of accessories to optimize your calf housing on page 29



## PENS

### FLEX-PEN

The Flex-Pen range offers removable pens that allow calves to be grouped or isolated for health or welfare reasons. The different installation setups (lengths and type of panels) offer an easy to install and clean solution. This modular system is freestanding, requires no posts or ground anchors, and the pen units can be wall-mounted using the mounting brackets (sold separately).

The plastic panels, molded in one piece, offer strength and durability by eliminating weak points, such as welds, to reduce the risk of cracking and ensure optimal strength, even in intensive use.

---

1 or 2 calves per door section

---

Up to 12 weeks

---

10-year warranty

---



Flex-Pen model with molded plastic front and rear door



Open Air Flex-Pen model with galvanized metal front and rear door

### SET UP YOUR PEN

#### Side/Depth

Side panels use EZ-Glide connection tabs and hinges for easy and quick set up.

AGRI-7105	5 ft side panel
AGRI-7106	6 ft side panel
AGRI-7107	7 ft side panel

If you want to pair two calves together, use the group housing bars instead.

AGRI-7113	5 ft housing bar
AGRI-7114	6 ft housing bar
AGRI-7115	7 ft housing bar

#### Front and back panel (hardware included)

##### Open Air Flex-Pen galvanized steel panel type

AGRI-7127	48" front panel. Includes: 2 pails (AGRI-1049) and holders (AGRI-6005)
AGRI-7128	48" back panel
AGRI-7129	36" front panel. Includes: 2 pails (AGRI-1049) and holders (AGRI-6005)
AGRI-7130	36" back panel

##### Ultra Flex-Pen molded plastic panel type

AGRI-7110	48" single front panel. Includes: 2 pails (AGRI-1049) and holders (AGRI-6005)
AGRI-7108	48" single back panel

#### Feeding options (sold separately)

AGRI-1067	Starter bowl
AGRI-7124	ULTRA metal bottle holder
AGRI-7024	OPEN metal bottle holder
AGRI-7025	Galvanized steel hay rack for side panels
AGRI-1074	4L bottle
AGRI-2444	OPEN universal hanging grain feeder
MBCBGMF1	Milk Bar Calf Buddy feeder
MBECO9L	Milk Bar EcoBucket

#### Other installation accessory

AGRI-7012	Wall mount bracket
-----------	--------------------



See the full list of accessories to optimize your calf housing on page 29

**DELUXE HUTCH**

This individual hutch range includes top vent, all-in-one rear door, rear bottom airflow vents and 2 pails with holders.

1 calf
Up to 10 to 12 weeks

**Dimensions**

SL Model		
Outside	87 x 49 x 55"	(221 x 124 x 140 cm)
Inside	79 x 44.5 x 50"	(201 x 113 x 127 cm)
EXL Model		
Outside	97.5 x 62.5 x 56"	(248 x 159 x 142 cm)
Inside	90.5 x 56.5 x 51"	(230 x 144 x 130 cm)



SL Model



EXL Model

**SET UP YOUR HUTCH**

**Choose the model**

**SL Model (from birth up to 10 weeks)**

AGRI-2016D	Right door
AGRI-2016G	Left door

**EXL Model (from birth up to 12 weeks)**

AGRI-1045D	Right door
AGRI-1045G	Left door

**Feeding options (sold separately)**

AGRI-2002	Hutch mount bottle holder
AGRI-2003	Fence mount bottle holder
AGRI-1074	4L bottle
AGRI-2444	Universal hanging grain feeder
MBCBGMF1	Milk Bar Calf Buddy feeder
MBECO9L	Milk Bar EcoBucket
AGRI-1048N	Pail holder

**Door or fence systems (sold separately, see page 30)**

AGRI-2001	Galvanized steel wire fence
AGRI-1800	Supreme fence kit for SL model
AGRI-1900	Supreme fence kit for EXL model
AGRI-2036	Hardware for wire fence
AGRI-1073	Feeding front door
AGRI-2062	Full closing front door for SL model
AGRI-1062	Full closing front door for EXL model
AGRI-2063	Hinge storm door for SL model

**Confinement accessories (sold separately)**

AGRI-2017	Tether and cable kit for SL model
AGRI-1017	Tether and cable kit for EXL model
AGRI-2041	Front plastic pipes for SL model
AGRI-1041	Front plastic pipes for EXL model



**TO ORDER YOUR REPLACEMENT PARTS**

AGRI-2022	Top vent for SL model
AGRI-1053	Top vent for EXL model
AGRI-1051N	All-in-one rear door
AGRI-2021	Airflow vent
AGRI-2054	Side door for SL model
AGRI-1054	Side door for EXL model

See the full list of accessories to optimize your calf housing on page 29



## GROUP HUTCHES

### DUAL XL\* HUTCH

The DUAL XL supplies a larger growing area for comfort, allowing calves to socialize at a young age to promote companionship and competitiveness, which research has proven to help achieve optimal growth.

2 calves

Up to 8 weeks

#### Dimensions

Outside	98 x 78 x 57"	(249 x 198 x 145 cm)
Inside	92 x 74 x 56"	(234 x 188 x 142 cm)

#### Included features

- A** Rotomolded from super strong, heavy gauge plastic. Completely opaque and protect against UV rays.
- B** Two side doors for bedding and feeding, ease the access to pails and brings and extra airflow. Just close them to protect from the elements (choice of having left or right door).
- C** The 21 in wide all-in-one rear door opens fully for more airflow capacity. Closed, rain cannot enter inside thanks to the integrated eyebrow ledge against weather conditions. Door stays in place with a sliding metal latch. Wide opening to increase bedding access.
- D** 3 bottom airflow vents at the back (5 airflow vents is available on special order).
- E** Adjustable riding roof vent.
- F** 2 double holders and 4 pails.

Hardware for assembly.



AGRI-4033

\*Patent pending

### SET UP YOUR HUTCH

#### Indoor setup

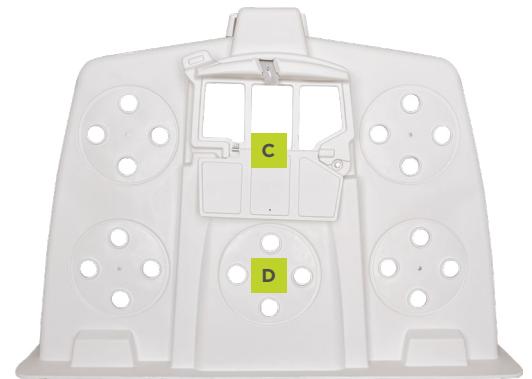
AGRI-1047 Left doors included (right doors on special order)

#### Fence systems available (sold separately, see page 30)

AGRI-1700	Supreme fence kit
AGRI-2012	Galvanized steel wire fence
AGRI-2036	Hardware for wire fence

#### Feeding options (sold separately)

AGRI-2002	Hutch mount bottle holder
AGRI-2003	Fence mount bottle holder
AGRI-1074	4L bottle
MBCBGMF1	Milk Bar Calf Buddy feeder
MBECO9L	Milk Bar EcoBucket
AGRI-1048N	Pail holder



Shown with the 3 airflow vents included, plus the 2 optional top airflow vents.

See the full list of accessories to optimize your calf housing on page 29

**SUPREME BUDDY HUTCH**

With the Supreme Buddy, the enhanced group hutch, calves can be housed together or separate, based on the needs and preference of the producer. The optional center panel can be removed quickly and easily, and a multi-position awning system provides shade. Also, an optional weather cover extension telescopes out and covers the entire door opening for ultimate weather protection.

**The package (AGRI-4060) includes:**

- A** AGRI-4074 Central post for front doors
- B** AGRI-4070 Hinge bracket for front right door
- C** AGRI-4071 Hinge bracket for front left door
- D** AGRI-4072 Front left door
- E** AGRI-4073 Front right door
- F** AGRI-4075 Awning (extension sold separately)
- G** 16746 Rear grid guard
- H** AGRI-6005 4 pail holders
- I** AGRI-4076 Awning support rod
- J** AGRI-1049H 4 pails of 9.5L with handles
- AGRI-4060HW Hardware

2 calves

Up to 14 weeks

**Dimensions**

Outside	106 x 80 x 79"	(269 x 229 x 203 cm)
Inside	101 x 86 x 79"	(256 x 218 x 201 cm)
Awning	53.25 x 23.5"	(135.2 x 59.7 cm)

**SET UP YOUR HUTCH**

**Feeding options (sold separately)**

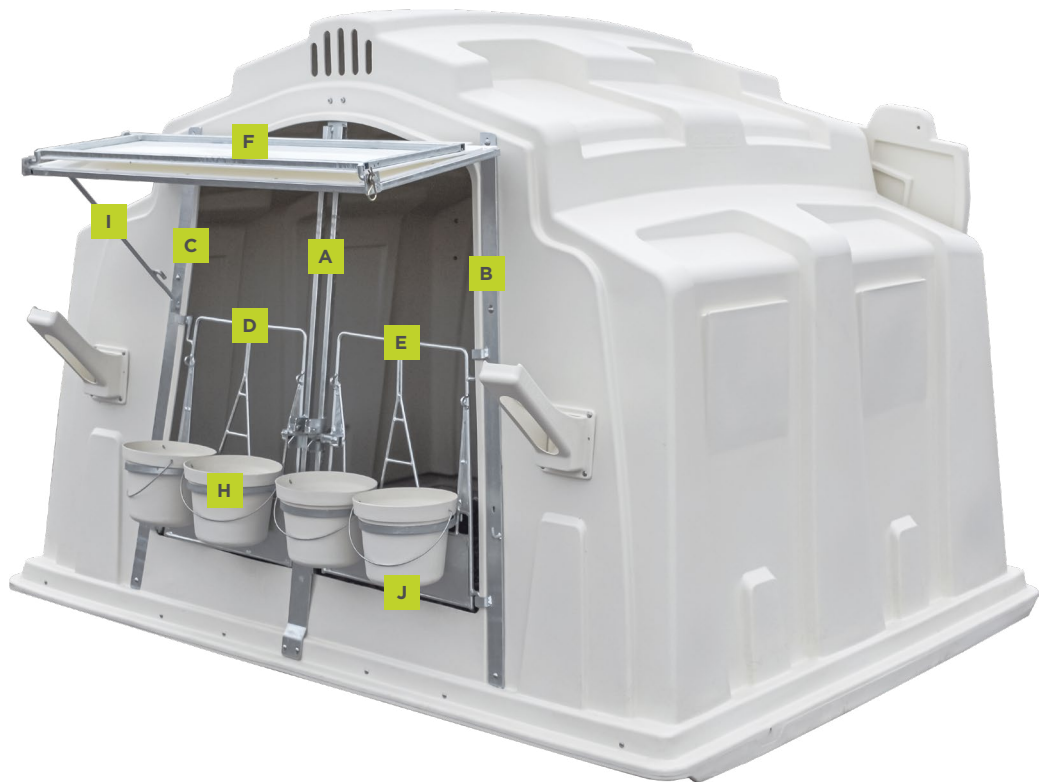
- AGRI-2002 Hutch mount bottle holder
- AGRI-2003 Fence mount bottle holder
- AGRI-1074 4L bottle
- MBCBGMF1 Milk Bar Calf Buddy feeder
- MBECO9L Milk Bar EcoBucket
- AGRI-1048N Pail holder
- MBCBGMF2 Milk Bar Calf Buddy 2 teats feeder, 20L (lid available)
- AGRI-2052 Plastic hay feeder with side door
- AGRI-2444 Universal hanging grain feeder (for fence mount)

**Optional accessories (sold separately)**

- AGRI-4077 Awning extension for elements
- AGRI-4034 Lift kit
- AGRI-4078 Removable center panel

**Available fence systems (sold separately, see page 30)**

- AGRI- 1033F Standard transition pen system
- AGRI-1034F XL transition pen system
- AGRI-1048N Pail holder



See the full list of accessories to optimize your calf housing on page 29



## GROUP HUTCHES

### GROUP HUTCH

This hutch is molded in one piece for superior strength! Compatible with the transition pen systems to increase the available space.

4-6 calves

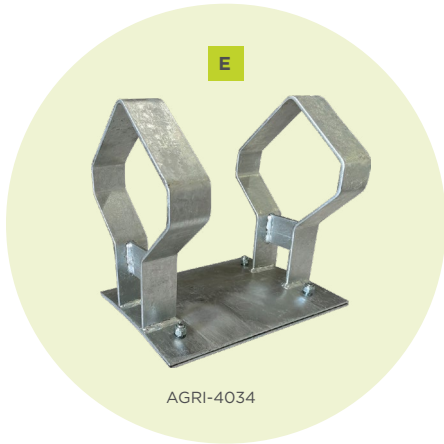
Up to 20 weeks

#### Dimensions

Outside	106 x 90 x 80"	(269 x 229 x 203 cm)
Inside	101 x 86 x 79"	(254 x 218 x 201 cm)

#### Features included

- A Molded plastic in one piece for superior strength.
- B Completely opaque to protect against the sun.
- C Front and rear airflow.
- D Integrated and sturdy polyethylene skid.
- E Lift kit sold separately (AGRI-4034).



### SET UP YOUR HUTCH

#### Lift kit (sold separately)

AGRI-4034 Lift kit

#### Available fence systems (sold separately, see page 30)

AGRI-1033F Standard transition pen system

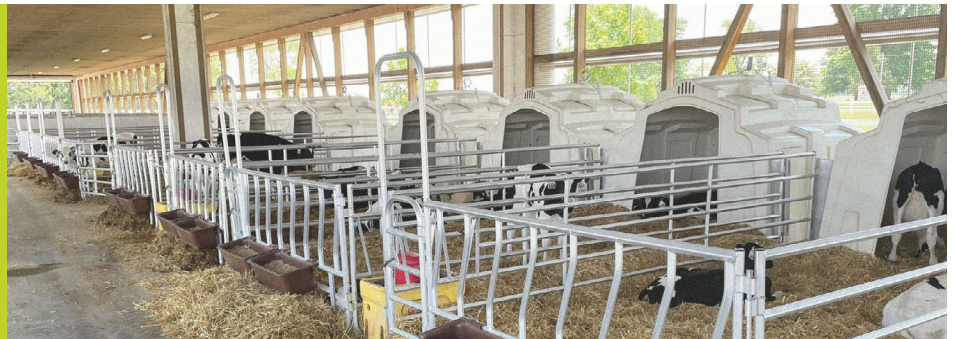
AGRI-1034F XL transition pen system

AGRI-4036 Transition pen system on wheels



Enhance the living space by adding a transition fence.

More information on page 30



See the full list of accessories to optimize your calf housing on page 29

**DRYZONE SLATTED FLOOR SYSTEM\***

The Dryzone is a slatted flooring specially designed for individual hutches and calf pens. Thanks to its universal design and high-quality plastic construction, it provides efficient drainage that keeps calves dry, reducing humidity and thus limiting the formation of ammonia – a gas that irritates the respiratory tract of young animals. By improving air quality and reducing bad odors, the Dryzone creates a healthier environment, contributing to the overall calves welfare and health. Perfect for outdoor and indoor installations.

**Benefits**

- Reduce bedding consumption.
- Modular slatted platform.
- Textured surface for a better traction for the calves.
- Optional quick-lock legs elevate platform for optimal drainage and airflow (AGRI-8007).
- Connecting floor sections using rails (AGRI-8045 and 8046), enabling larger floor sections to be lifted.
- Easier cleaning without separate dismantling.
- Position brackets helps alignment and stability (AGRI-8041, 8033 and 8043).



AGRI-8007



AGRI-8041



AGRI-8040



AGRI-8043



AGRI-8033



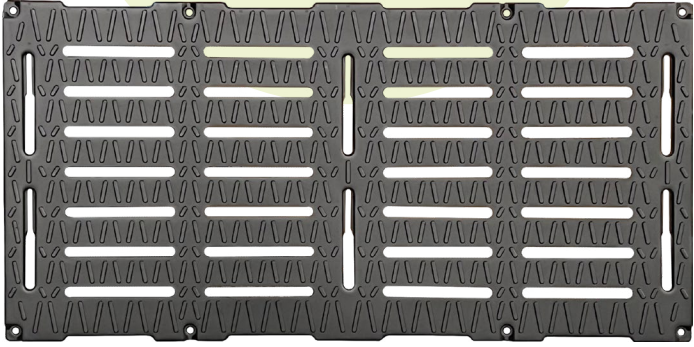
AGRI-8045



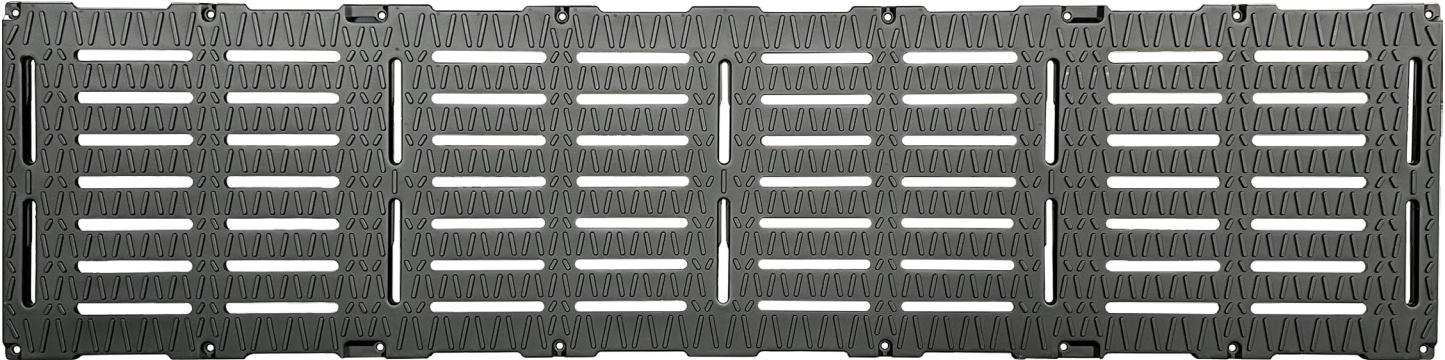
AGRI-8046

**Parts**

AGRI-8008	Dryzone floor 8 ft x 2 ft x 1.625" (244 x 61 x 4 cm)
AGRI-8009	Dryzone floor 4 ft x 2 ft x 1.625" (123 x 61 x 4 cm)
AGRI-8007	Quick-lock legs
AGRI-8040	Connector pins
AGRI-8041	Side position bracket
AGRI-8033	Front/rear position bracket for Open Air Flex-Pen
AGRI-8043	Front/rear position bracket for Ultra Flex-Pen
AGRI-8045	6 ft connector rail (for indoor pens of 5 ft and 6 ft)
AGRI-8046	8 ft connector rail (for indoor pen of 7 ft)



AGRI-8009



AGRI-8008

\*Patent pending





Robustness and adaptability for optimized rearing

## An economical, fixed and modular option

### AGRICLÉ'S PENS MADE OF SUPERIOR QUALITY PVC

Developed by Agriclé, the PVC panel calf pens are designed to offer a reliable solution, exceeding the quality standards of the market. An expert in alternative construction materials, Agriclé guarantees durability by combining the excellence of PVC and stainless steel hardware. These pens guarantee longevity and ease of maintenance.

Models available in fixed or adjustable configurations, depending on the space and specific parameters of each farm. Thanks to their modular design, the standard models can be easily adapted to the producer's requirements, creating a healthy and safe environment for calves, while ensuring exceptional longevity.

## Premium quilted calf blankets

### CALF BLANKETS

The Milk Bar quilted calf blankets are made with a high-quality waterproof material with a rubber layer within the coat. This layer has very small holes allowing air to pass through but are not big enough for water molecules. Straps are adjustable and clips are made of sturdy plastic.

- Clip and velcro at neck, clips under belly and two more for back legs.
- Large size of 28 inches.



MBM-FF-L



MBM-PR-L



MBM-DD-L

**FEEDING ACCESSORIES**



AGRI-1048N



AGRI-1049H



AGRI-1049N



AGRI-6005



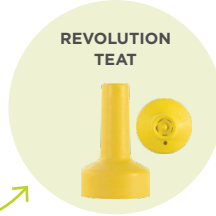
AGRI-3024



AGRI-1067



AGRI-1074



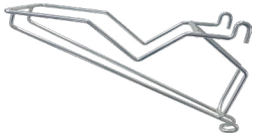
REVOLUTION  
TEAT



MBCBGMF1



MBECO9L



AGRI-7024



AGRI-7124



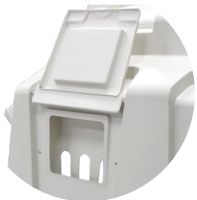
AGRI-2002



AGRI-2003



AGRI-7025



AGRI-2052



AGRI-1052



AGRI-3052



AGRI-2444



AP-118



AP-800



AP-2000



AP-1800



AFP-492

- AGRI-1048N Double holder for pails
- AGRI-1049H 9.5 L bucket with handle
- AGRI-1049N 9.5 L bucket without handle
- AGRI-6005 9.5 L pail holder
- AGRI-3024 Pail holder (Ultra Flex-Pen)
- AGRI-1067 Starter bowl
- AGRI-1074 4 L bottle
- MBCBGMF1 Milk Bar Calf Buddy feeder
- MBECO9L Milk Bar EcoBucket
- AGRI-7024 Metal bottle holder
- AGRI-7124 Metal bottle holder (Ultra Flex-Pen)
- AGRI-2002 Bottle holder for Buddy Hutch mount

- AGRI-2003 Bottle holder for AGRI-2001 fence mount
- AGRI-7025 Galvanized steel hay rack for side panels (Ultra Flex-Pen)
- AGRI-2052 Inside hay feeder with side door (SL model)
- AGRI-1052 Inside hay feeder with side door (EXL model)
- AGRI-3052 Inside hay feeder with side door (Dual XL model)
- AGRI-2444 Universal hanging grain feeder (33 lbs capacity)
- AP-118 2 L feeder
- AP-800 32 L polyethylene trough
- AP-2000 100 L trough
- AFP-1800 180 L trough
- AFP-492 Automatic feeder with lid (100 L capacity)



# Enhance the Living Space Easily!

## SUPREME FENCE

The Supreme 3-in-1 fence has been designed to adapt to the great needs of mobility and cleanliness in a quick and convenient way. Two pails and holders are included.

Fence kit for the hutch		Fence dimensions
AGRI-1800	SL Model (AGRI-2016)	63.5 x 47 x 42"
AGRI-1900	EXL Model (AGRI-1045)	63.5 x 58.25 x 42"
AGRI-1700	Dual XL Model (AGRI-1047)	78 x 77 x 42"

**Quickly increases living space**

**Supports hutch for a complete cleaning**

**Stands up easily for easy cleaning of the hutch**

Wheel set available (AGRI-1813)

Bottle and holder sold separately

## TRANSITION PEN SYSTEMS

The transition pen systems are designed to simply snap together to the Group Hutch (and Buddy Hutch), allowing a large additional outdoor living space.

Troughs sold separately (AP-800)

Pen		Pen dimensions
AGRI-1033F	Standard transition pen	192 x 108"
AGRI-1034F	XL transition pen	192 x 138"



**Choose the XL pen for an additional 480 sq. ft.!**

## TRANSITION PEN ON WHEELS

The pen on wheels is very practical! Clean effortlessly: simply roll the pen so calves can enter inside without stress.

Includes 3 troughs (AP-800), side rails, 10 in wheels and the lift kit (AGRI-4034).

Pen		Pen dimensions
AGRI-4036	Transition pen on wheels	96 x 108"



**WIRE FENCE**

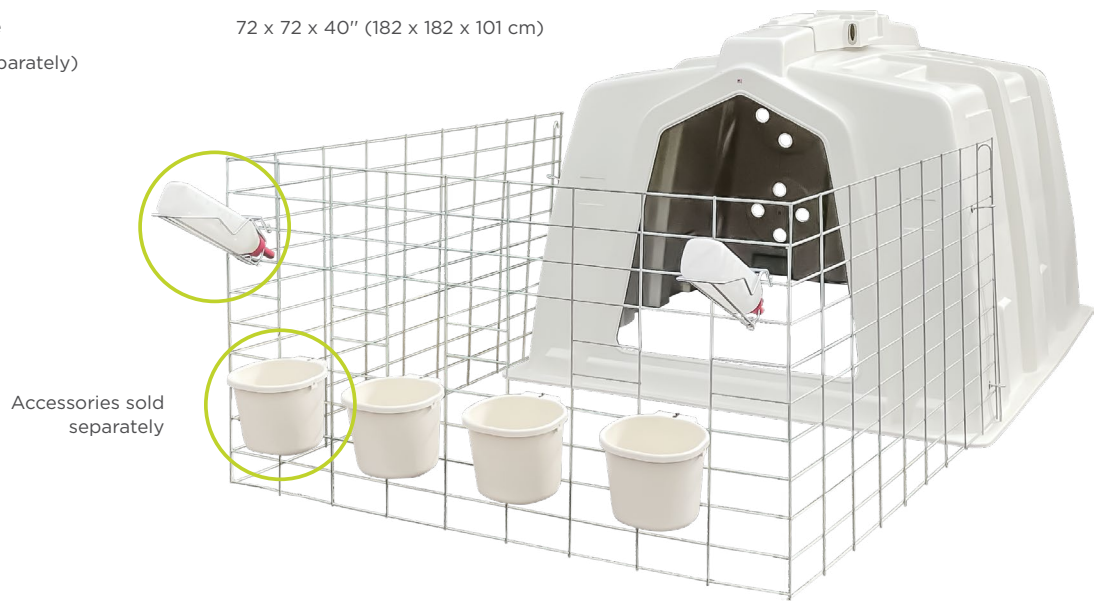
Economical option compatible with Deluxe and Dual XL hutches, the wire fences are made of steel and arrive uncut for flexibility.

**Fence kit for hutches**

AGRI-2001	Deluxe SL and EXL wire fence
AGRI-2012	Dual XL wire fence
AGRI-2036	Hardware (sold separately)

**Fence dimensions**

63 x 49 x 40" (160 x 124 x 101 cm)
72 x 72 x 40" (182 x 182 x 101 cm)



**SUEVIA WATERERS**

In the middle of planning your nursery setup? It's the perfect time to think about waterers.

The vision of offering the best, for as long as possible, was born with the first product in our network: Suevia waterers. Unbeatable in quality, it's this DNA that has been anchored in our company since the beginning, which today drives us to expand our offer while remaining faithful to our sustainability criteria and our values.



To learn more on Suevia waterers





# AGRICLÉ

AN AVENORD DIVISION



450 994-3130

[ventes@avenord.com](mailto:ventes@avenord.com)

[agricle.com](http://agricle.com)