



AGRICULTURAL SUPPLIES

AGRICLÉ

CALVES, LAMBS AND KIDS FEEDING	3
FEED SUPPLIES	7
DAIRY CATTLE ACCESSORIES	13
CLEANING AND SCRAPING	15
HOOVES CARE	18
IDENTIFICATION AND WEIGHING	21
RESTRAINING	24
GENERAL SUPPLIES	26
BRUSHES	28
MATS	30



OUR TOP SELLERS





SEE OUR RANGE OF
SPECIALIZED MILK BAR
PRODUCTS




2,5 LITERS VARIO BOTTLE, SUEVIA

- This ergonomically shaped feeding bottle with handle is made of sturdy, food-grade plastic.
- Adjustable vent valve.
- Integrated non-return valve enables even ill or weak animals an easy liquid intake.
- Quantity indicator graduated in liters.



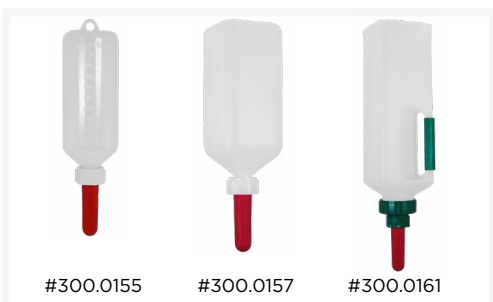
3 LITERS PROFI CALF DRENCHER WITH FLEXIBLE TUBE, SUEVIA

- Special tube with heavy brass head to facilitate insertion into the calf's mouth and gullet.
- 45 cm mark on the flexible tube.
- Large filling opening.
- Integrated vent valve in the hand grip prevents formation of vaccum.
- Made of sturdy and food-grade plastic.
- Can optionally be taken for medicine.
- Recommended by veterinarians.
- Quantity indicator graduated in liters.



3 LITERS CALF DRENCHER WITH RIGID TUBE, SUEVIA

- Calf drencher with tube for gullet.
- Made of sturdy and food-grade plastic.
- Large filling opening.
- Integrated vent valve in the hand grip prevents formation of vaccum.
- Ideal for medication.
- One-hand service possible.
- Quantity indicator graduated in liters.



1, 2 AND 3 LITERS FEEDING BOTTLES, SUEVIA

- Bottles to fed calves with quantity indicator graduated in liters.
- Made of sturdy and food-grade plastic.
- The 3 liters size has a large filling opening and an integrated vent valve in the hand grip to prevents formation of vaccum. Can optionally be taken for medicine.
- All three models are easy to clean.

#300.0155 : 1 liter
#300.0157 : 2 liters
#300.0161 : 3 liters



#300.0075 #300.0089 #300.0071 #300.0087



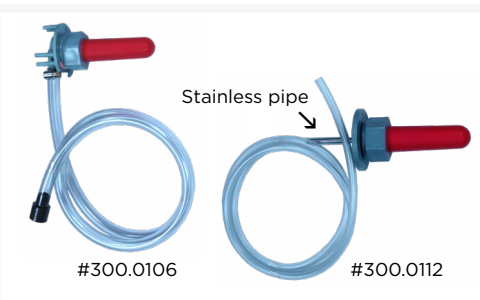
#300.0094 #300.0095 #300.0104



#300.0081 #300.0083 #300.0084

TEATS FOR FEEDING BUCKETS, SUEVIA

- #300.0075 : Complete floating teat with sturdy plastic base. Small lug for fixation of safety chain. Easy changing of teat
- #300.0089 : Spare teat for model #300.0075
- #300.0071 : Complete floating teat with aluminium base
- #300.0087 : Spare teat for model #300.0071
- #300.0094 : Slightly conical teat with cross slot
- #300.0095 : Slightly cylindrical teat with cross slot
- #300.0104 : 100% natural rubber teat with cross slot. Especially soft for easy acceptance
- #300.0081 : Slightly cylindrical teat with cross slot
- #300.0083 : Slightly cylindrical teat with cross slot
- #300.0084 : Slightly conical teat with cross slot



#300.0106 #300.0112

CALF BAR FEEDING KIT FOR AUTOMATIC CALF FEEDERS, SUEVIA

- Integrated non-return valve and teat included.
 - Easy milk flow thanks to big tube diameter.
 - Multi-purpose > e.g.: for drinking milk out of a storing tank or trough.
 - #300.0106 : Complete kit for **front wall** mounting. 47" tube
 - #300.0112 : Complete kit for **through-the-wall or partition** mounting. 59" tube.
- This model has a little stainless steel pipe for better penetration through the wall



#AGRI-1074

4 LITERS SNAP ON TYPE BOTTLE, AGRI-PLASTICS

- Feeding bottle made of sturdy plastic.
- Extremely durable for a long life.
- Quantity indicator graduated in liters.



Ideal to use with the Milk Bar Revolution teats, both training (#MBTREV-J) and regular (#MBTREV) models. Once fitted, the teat stays securely in place. (sold separately).



#300.0013



#300.0019



#300.0054
#300.0057



#300.0069



#300.0059



#300.0067



#300.0049



#300.0058

8 AND 12 LITERS CALF BUCKETS, SUEVIA

- Buckets made of robust and food-grade plastic, lactic acid-resistant, cadmium and lead-free.
- Comes with the red teat #300.0084 and its valve.
- Quantity indicator graduated in liters.
- Easy to clean thanks to smooth surface.
- Solid metal handle.
- The model #300.0013 has slots for hanging the bucket on plastic or metal hooks.

Accessories

- #300.0049 : Lid
- #300.0054 : Plastic hook
- #300.0057 : Metal hook
- #300.0058 : Galvanized steel hanger
- #300.0067 : Spanner for bucket drinker valve

Spare parts

- #300.0059 : Complete valve with seal
- #300.0069 : Rubber seal



#300.0092



#300.0093



#300.0103

FEEDING TEATS FOR LAMBS AND KIDS, SUEVIA

- #300.0092 : Rubber teat
- #300.0093 : Rubber teat
- #300.0103 : Latex teat



#300.0156



#300.0159



#300.0090



#300.0176



#300.0079

1 AND 2 LITERS FEEDING BOTTLES FOR LAMBS AND KIDS, SUEVIA

- Bottles made of food-grade plastic. Teat included.
- Quantity indicator graduated in liters.

- #300.0156 : 1 liter capacity
- #300.0159 : 2 liters capacity

Accessories

- #300.0090 : Teat with valve
- #300.0176 : Non-return valve made of food-grade plastic
- #300.0079 : Non-return valve made of aluminium



8 LITERS BUCKET WITH 5 TEATS FOR LAMBS AND KIDS, SUEVIA

- Made of robust food-grade plastic.
- Supplied with red teats and valves.
- Cadmium-free and acid-resistant. Easy to clean.
- Front and rear flat sides for easy hanging.
- Quantity indicator graduated in liters.
- Dimensions : 12" x 9" x 11".

10 LITERS BUCKET WITH 6 TEATS FOR LAMBS AND KIDS, SUEVIA

- 2 compartments of 5 liters for a 10 liters total capacity.
- Made of robust and food-grade plastic.
- Supplied with red teats and valves.
- Cadmium-free and acid-resistant. Easy to clean.
- Easily installed on a fence or dividing wall.
- Quantity indicator graduated in liters.
- Dimensions : 10" x 11" x 10".

Accessories

- #300.0049 : Lid
- #300.0054 : Plastic hook
- #300.0057 : Metal hook
- #300.0067 : Spanner for bucket drinker valve

Spare parts

- #300.0059 : Complete valve with seal
- #300.0069 : Rubber seal



10 LITERS BUCKET WITH 6 SMALL TEATS FOR LAMBS AND KIDS, SUEVIA

- 2 compartments of 5 liters for a 10 liters total capacity.
- Made of robust and food-grade plastic.
- Supplied with red teats and valves.
- Cadmium-free and acid-resistant. Easy to clean.
- Easily installed on a fence or dividing wall.
- Quantity indicator graduated in liters.
- Dimensions : 10" x 11" x 10".

Accessory

- #300.0053 : Lid with lug for easy opening



MILK ACCESSORIES



MILK HEATER, SUEVIA

- Made of high-quality aluminium, this heater is protected against moisture.
- Graduated thermostat for a better control.
- Power-on indicator light.
- Switches off after having reached the desired temperature and maintains it.
- Thermo-dive from 6" to a maximum of 32".
- Smooth surface, so no residue build-up.
- 230 V - 2300 W electrical outlet.
- Weight : 7.5 lbs.

STAINLESS STEEL WHISK, SUEVIA

- Ideal to mix the milk in a bucket.

#300.0220 : 5 wires whisk

#300.0221 : 10 wires whisk

THERMOMETERS, SUEVIA

#300.0454 : For measuring milk temperature. Made of food-grade plastic, it can be opened for cleaning. 14" long.

#300.0455 : For taking the animal's temperature. Digital display with acoustic signal.



#300.0361



#300.0055

26 LITERS CORNER TROUGH, SUEVIA

- Large corner trough without hooks.
- High stability due to reinforced frontside.
- Stackable for transport.
- Dimensions : 24" long x 18" wide x 12" high.

Accessories

#300.0055 : Plastic hanging hooks (sold in pack of 2)



#300.0362



#300.0055

11 LITERS TROUGH WITH HANDLE, SUEVIA

- Robust trough with integrated carrying handle for easy handling.
- Stackable for transport.
- Dimensions : 12" long x 12" wide x 15" high.

Accessories

#300.0055 : Plastic hanging hooks (sold in pack of 2)



#300.0364

14 LITERS ROBUST TROUGH, SUEVIA

- Robust trough without hooks.
- High stability due to reinforced frontside.
- Anti-biting edge on the front.
- Stackable for transport.
- Dimensions : 17.5" x 11" x 13".



#300.0372

8 LITERS MULTIPURPOSE TROUGH, SUEVIA

- Extremely strong design trough without hooks.
- Stackable for transport.
- Dimensions : 12" x 12" x 9".



#300.0373

8 LITERS FOAL TROUGH, SUEVIA

- Supplied with stainless steel bars.
- The bars are adjustable.
- Very robust and easy to install.
- Dimensions : 12" x 12" x 9".



#300.0375

5 LITERS TROUGH FOR LAMBS AND GOATS, SUEVIA

- Particularly strong, this feeder is very practical for all types of use.
- Stackable for transport.
- Dimensions : 13" x 8" x 6".



#160.0210

19, 22 AND 26 LITERS TROUGH, SUEVIA

- Made of UV-resistant polyethylene.
- No sharp edges to avoid injury to the animal.
- Anti-waste rim prevents spillage.
- Bottom drain plug for easy cleaning.

#160.0210 : Dimensions of 23" x 16" x 10". 22 liters capacity

#160.0211 : Dimensions of 19 1/4" x 15" x 9 1/2". 26 liters capacity

#160.0212 : Dimensions of 24" x 12" x 6". 19 liters capacity



#160.0211



#160.0212



#300.0360

#300.0055

12 LITERS FLAT BACK TROUGH, SUEVIA

- Very robust design.
- Metal handle can be fixed at the trough's rim, which prevents horses from playing with it.
- Quantity indicator graduated in liters.
- Stackable for transport.
- Dimensions : 15" x 12" x 11".

Accessories

#300.0055 : Plastic hanging hooks (sold in pack of 2)



#300.0365



#300.0055

20 LITERS FLAT BACK TROUGH, SUEVIA

- Very robust design and high stability due to reinforced frontside.
- The rim prevents the horse from chewing the trough.
- Quantity indicator graduated in liters.
- Stackable for transport.
- Dimensions : 14.5" x 14" x 12".

Accessories

#300.0055 : Plastic hanging hooks (sold in pack of 2)



#300.0288



#300.0286



#300.0284

5, 10 AND 50 LITERS BOWLS FOR GRAINS AND FEED, SUEVIA

- Made of food-grade plastic.
- Thick rim for greater robustness on models 300.0288 and 0286.
- Integrated carrying handles for easy handling on model 300.0284.

Dimensions :

#300.0288 : Ø 12" x 5", 5 liters capacity

#300.0286 : Ø 13" x 5", 10 liters capacity

#300.0284 : Ø 22" x 10", 50 liters capacity



#300.0283



#101.0965

LICK STONE HOLDERS, SUEVIA

#300.0283 : Made of sturdy plastic and no sharp edges.

- Dimensions : 8" x 8" x 8"

#101.0965 : Made of stainless steel.

- Dimensions : 9.5" x 10" x 8"



#300.1001



#300.1002

HAY RACKS, SUEVIA

- Made of galvanized steel. Very robust.
- For wall mounting.

#300.1001 : Dimensions of 20" x 14" x 9"

#300.1002 : Dimensions of 31" x 18" x 18"



#300.1003

CORNER HAY RACK, SUEVIA

- Made of galvanized steel. Very robust.
- For corner mounting.
- Dimensions : 28" x 28" x 18".



#AGRI-7025

LARGE HAY RACK, AGRI-PLASTICS

- Large size made of galvanized steel. Very robust.
- For installation on a dividing wall.
- Dimensions : 25 3/4" x 17', x 20".



#300.0222
#300.0226

#300.0224
#300.0225

#300.0448

FEED SCOOPS, SUEVIA

- Made of robust and food-grade plastic.
- #300.0224 : Rounded model, 4.4 lbs capacity
- #300.0225 : Rounded model, 2.2 lbs capacity
- #300.0222 : Square model, 2.2 lbs capacity
- #300.0226 : Square model, 4.4 lbs capacity
- #300.0448 : Scoop with quantity indicator graduated at each 500 ml. 2 liters capacity



#300.0214

#300.0213

#300.0215

#300.0217

MEASURING CUPS, SUEVIA

- Made of robust and food-grade plastic.
- Cadmium-free and acid-resistant.
- With quantity indicators.
- #300.0213 : 1 liter
- #300.0214 : 2 liters
- #300.0215 : 2 liters
- #300.0217 : 3 liters



#300.0170

#300.0172

#300.0088

2.5 LITERS PELLETT BOTTLE, SUEVIA

- Feeding bottle made of robust and food-grade plastic.
- Allows early feed intake for healthy growth.
- Big opening for filling.
- With quantity indicators.

Accessories

- #300.0172 : Wall bracket
- #300.0088 : Spare teat



FEED SILAGE CARTS, AGRI-PLASTICS

- Made of high-quality and sturdy polyethylene.
- Rotomolded so no seams.
- 10" swivel front wheels and fixed rear wheels.
- Do not rust.
- Heat and cold resistant.

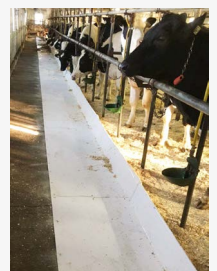
#AGRI-1006 : Dimensions of 46" x 21.5" x 36". 290 liters capacity (8 bushels)
 # AGRI-1007 : Dimensions of 45.5" x 29" x 36". 436 liters capacity (12 bushels)
 #AGRI-1008 : Dimensions of 59.5" x 27.5" x 38". 654 liters capacity (18 bushels)
 #AGRI-1034 : Dimensions of 63" x 28" x 36". 618 liters capacity (17 bushels)
 #AGRI-1009 : Dimensions of 63" x 37" x 38". 727 liters capacity (20 bushels)



#MANGEOIRE-HDPE-8

FEEDER FOR FEEDING ALLEY

- Feeder made of robust and resistant HDPE plastic.
- Smooth surface facilitates cleaning and prevents dirt build-up.
- The food is always dry so fewer losses.
- The edge is 9" high.
- Dimensions : 36" wide x 8' long x 3/8" thick.
- Weight : 70 lbs.



FEEDER IN ROLL FOR FEEDING ALLEY

- Roll sheet made of robust and resistant HDPE plastic.
- Supplied with front and rear mouldings as well as installation hardware.

#MANGEOIRE-HDPE-3050-KIT : Dimensions of 30" wide x 50' long x 1/4" thick
 #MANGEOIRE-HDPE-3050-KIT : Dimensions of 30" wide x 50' long x 1/4" thick

Spare parts

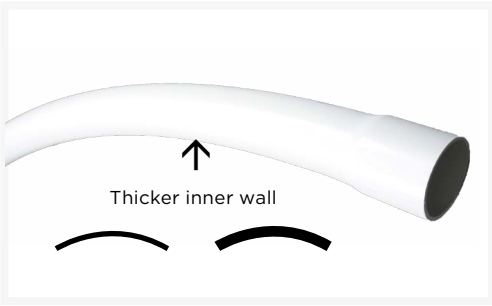
#HDPE.30.50.220 : Roll of 30" wide
 #HDPE.36.50.220 : Roll of 36" wide
 #M-MANG : 10' long moulding



PVC PIPES FOR FLEX AUGER

- A calcium-zinc resin-based compound.
- Highly durable for long life.
- Bell-style end cap.
- Custom dimensions available upon request (minimum quantity required)

#PVC200FAPIPE : 10' long x 2" diameter. 75/pallet
#PVC300FAPIPE : 10' long x 3" diameter. 50/pallet
#PVC350FAPIPE : 10' long x 3,5" diameter. 50/pallet



PVC ELBOWS FOR FLEX AUGER

- A calcium-zinc resin-based compound.
- The inner wall is thicker than 1 mm for increased resistance to screw friction.
- Professional quality.

#PVCELBOW200 : 5' long x 2" diameter
#PVCELBOW300 : 5' long x 3" diameter
#PVCELBOW350 : 5' long x 3.5" diameter



PVC COUPLING FOR FLEX AUGER

- A calcium-zinc resin-based compound.
- Ideal to connect pipes together.

#PVCCPLR200 : 6.5" long x 2" diameter
#PVCCPLR300 : 6.5" long x 3" diameter
#PVCCPLR350 : 6.5" long x 3.5" diameter





MAGNETS

- Magnets catch foreign bodies in cattle stomachs and help prevent perforation by metallic substances.

#134-343 and #207-123 : Dimensions of 3" x 1/2"

#300.0545 and #300.0546 : Dimensions of 4" x 1.25"

#300.0547 : Magnet applicator made of super strong PVC. Dimensions of 25" x 1.5"



MILK JUGS, SUEVIA

- Made of robust and food-grade plastic.
- Cadmium and lead-free and acid-resistant.

#300.0120 : Jug with stainless steel handle. 10 liters capacity

#300.0122 : Jug with stainless steel handle. 20 liters capacity

#300.0139 : Oval-shaped jug, perfect for the fridge. Seal in lid to prevent milk spillage. 2 liters capacity



20 LITERS SEPARATION MILK JUG, SUEVIA

- Ideal to separate cow's milk, for example to collect colostrum milk, for antibiotic use or for a cow with mastitis.
- Made of robust and food-grade plastic.
- Lid with two outlets.
- Stainless steel handle.

PLUG FOR MILKING MACHINE, SUEVIA

- Made of food-grade PVC.
- Easy to install during milking of cows with only three udder teats.
- Suited for all teat cups usual in trade.



12 LITERS QUARTER MILKER, SUEVIA

- Made of robust and food-grade plastic.
- Isolates udder teats that could become infected during milking.
- Stainless steel handle.
- Big opening for easy cleaning.
- Pressure range from 0.4 to 0.6 bar.



1 LITER PRE-MILKING CUP, SUEVIA

- To control the first milk flows of each teat before milking.
- Made of robust and food-grade plastic.
- With quantity indicators.
- The lid is perforated to serve as a sieve.



250 ML TEAT DIP CUP, SUEVIA

- Ideal to disinfect teats after milking.
- Food-grade plastic.
- With hook for attaching to your belt.
- With quantity indicators.
- Model #300.0351 has a non-return valve that prevents solution from flowing back into the cup. Prevents contamination of unused solution.



MASTITIS TEST PLATES, SUEVIA

- These test plates are made of food-grade plastic.
- The presence of mastitis can be detected by spraying about 2 ml of milk from each teat into the compartments.



PLASTIC ANTI-SUCKING RINGS, SUEVIA

- Lightweight, with rounded tips to avoid injuring the animal when inserted in the nostrils. Adjustment screws with nuts and butterflies.

#300.0478 : For calves and young animals

#300.0479 : For young animals and cattle

#300.0480 : For cattle

RUBBER ANTI-SUCKING PREVENTORS, SUEVIA

- These anti-sucking devices prevent animals from suckling each other (cross-suckling).

#300.0141 : Easy adjustment and reliable fit thanks to the integrated metal spring

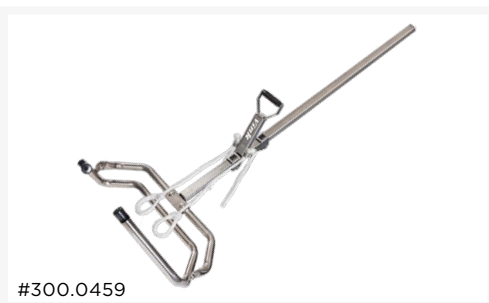
#300.0142 : For young cattle. Easy attachment to muzzle edge. Cast-in metal spikes

#300.0143 : For large cattle. Easy attachment to muzzle edge. Cast-in metal spikes



CALVES MUZZLE, SUEVIA

- Made of plastic with heavy-duty nylon halter.
- To prevent calves from suckling.



VINK CALVING PULLER FOR SIMULTANEOUS TRACTION, SUEVIA

- Robust construction and completely made of stainless steel. Long service life.
- Pulling directions upwards, downwards and backwards.
- Tension can be loosened immediately in case of complication.
- Calf puller adopts automatically the right position, whether the dairy cow is lying down or standing up.
- A single person can do the job.
- No sliding away whilst application.
- A more robust version for beef cattle, with alternate traction, is available on special order (#300.0640). Reduces the risk that calf gets stuck in cow's pelvis.

PRO MANURE FORKS, SUEVIA

HIGH-QUALITY
PLASTIC
VIRTUALLY
UNBREAKABLE!



#300.0548



#300.0672



#300.0549



- Whether in flat, raised-side or basket versions, these PRO manure forks are a must on the farm. That's why they're one of our « best sellers ».
 - Virtually unbreakable flexible tines!
 - Long product life.
 - Wood handles sold separately : #300.0449 and #300.0451.
- #300.0548 : 15" wide
#300.0672 : 16 3/4" wide
#300.0549 : 15 1/2" wide x 5" depth



#300.0436

#300.0438

ECONOMICAL MANURE FORKS, SUEVIA

- Flat or basket version.
 - Wood handles sold separately : #300.0449 and #300.0451.
- #300.0436 : 15" wide.
#300.0438 : 15 1/2" wide x 5" depth.



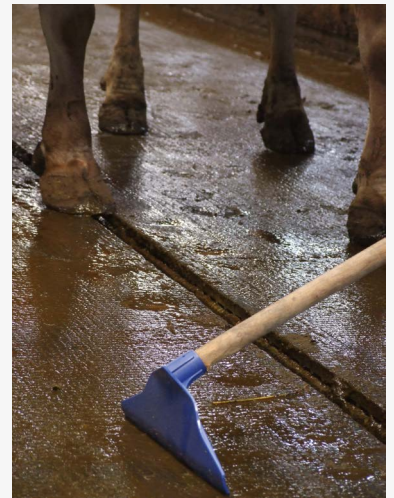
#300.0238



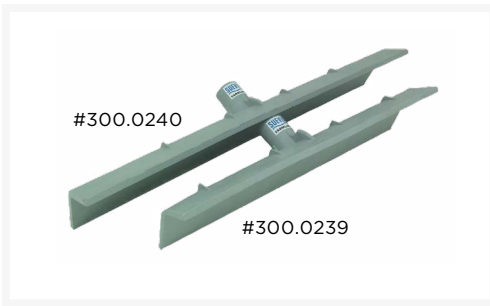
#300.1020

MANURE SCRAPER, SUEVIA

- Made of ammonia-resistant, high-strength plastic.
 - Lightweight, without thread and very useful.
 - Wood handles sold separately : #905.002
- #300.0238 : 14" wide
#300.1020 : 18" wide



CLEANING AND SCRAPING

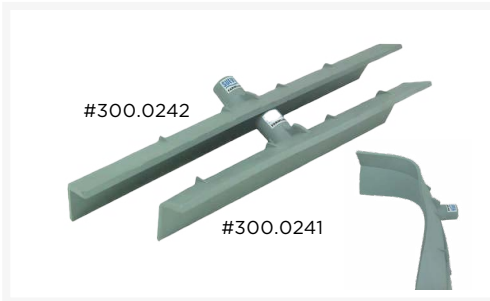


RIGID MANURE SCRAPERS, SUEVIA

- Perfect for large surfaces for an impeccable cleaning.
- These scrapers have an anti-splash edge of 5".
- Wood handle sold separately : #300.0453.

#300.0239 : 16" long

#300.0240 : 22" long



FLEXIBLE SCRAPERS, SUEVIA

- Made of flexible and resistant plastic.
- Perfect for large surfaces for an impeccable cleaning.
- These flexible scrapers have an anti-splash edge of 5".
- Wood handle sold separately : #300.0453.

#300.0241 : 16" long

#300.0242 : 22" long



ALUMINIUM MULTIPURPOSE SHOVELS, SUEVIA

- Reinforced steel edge.
- Material thickness of 2 mm.
- Wood handle sold separately : #300.0452.

#300.0382 : Size #5 is 10.5" wide

#300.0383 : Size #7 is 12" wide

#300.0384 : Size #9 is 15" wide



#300.0385

#300.0386

PLASTIC MULTIPURPOSE SHOVELS SUEVIA

- Very robust and lightweight design.
- With steel edge.
- Ideal to shovel grains.
- Can also be use for snow.
- Wood handles sold separately :

#300.0452 and #300.0543

Spare parts

#300.0401 : Metal edge

QUALITY WOOD HANDLES

- Solid construction for long service life.
- The wood is soft for a good grip during use.
- 1" diameter, except for #300.045 which is 1.5".

#905.002 : Quality wood, 69" long

#905.003 : Quality wood, 51" long

#300.0449 : Aspen wood, 49" long

#300.0450 : Ash wood, 53" long

#300.0451 : Aspen wood, 71" long

#300.0452 : Ash wood, 51" long

#300.0453 : Ash wood, 51" long

The following models feature a tapered tip :

#300.0449, 300.0450 and 300.0451





MANURE COLLECTOR WITH RAKE, SUEVIA

- To collect slurry or manure.
- Made of sturdy plastic with scoop and rake.
- Equipped with a handle for easy transport
- Clip for rake attachment.
- 18" long.



MULTIPURPOSE NYLON BRUSHES

- With soft, scratch-resistant nylon bristles.
- Handy for cleaning feeders, troughs, footbaths, etc.
- Sturdy plastic handles.
- #601 : 9" long.
- #602 : 20" long.



CLEANING BRUSH, SUEVIA

- With semi-rigid nylon bristles.
- The ergonomic brush shape makes it easy to grip.
- Handy for cleaning a little of everything.



UDDER SPRAYER, SUEVIA

- Ideal for cleaning animal udders.
- Sprays water as a shower jet.
- Valve closes in vertical hanging position.
- Water is released by simply pressing the handle, and automatically cut off when released.



CLEANING SPRAYER, SUEVIA

- Sprays water as a shower jet.
- Quality rubber handle.
- Ideal for cleaning a little of everything on the farm.

HOOVES CARE

QUALITY KNIVES, SUEVIA

WITH STAINLESS STEEL BLADES AND ERGONOMIC WOOD HANDLES, OUR KNIVES ARE ESSENTIAL FOR HOOF TRIMMERS!
ALL BLADES ARE SHARPENABLE.



#300.0271

DOUBLE CUT

- Wide blade made of high-quality stainless steel.
- For left and right-handed user.



#300.0272

LEFT CUT

- Wide blade made of high-quality stainless steel.
- For left handed-user.



#300.0273

RIGHT CUT

- Wide blade made of high-quality stainless steel.
- For right handed-user.



#300.0275

RIGHT CUT

- Wide blade made of stainless steel.
- For right handed-user.



#300.0276

LEFT CUT

- Wide blade made of stainless steel.
- For left handed-user.



#300.0277

LEFT CUT

- Narrow blade made of stainless steel.
- For left handed-user.



#300.0278

DOUBLE CUT

- Wide blade made of stainless steel.
- For left and right-handed user.



SEMIFLEX ABRASIVE DISC, 16 CORNS, SUEVIA

- Semi-flexible, this disc is ideal for trimming hooves and claws.
 - Provides even base for further treatments such as glueing wooden blocks.
 - Long service life thanks to waved surface.
- #300.0194 : 4.5" diameter
 #300.0195 : 5" diameter



LOW DENSITY ABRASVIE DISC, SUEVIA

- Steel disc braided on both sides.
- 2-3 mm graining, low density.
- Long service life.
- Suited for angle grinding machine usual in trade.
- Extremely smooth running.
- 4.5" diameter.



LOW DENSITY ABRASVIE DISC, SUEVIA

- Steel disc braided on both sides.
- 3-4 mm graining, low density.
- Long service life.
- Suited for angle grinding machine usual in trade.
- Extremely smooth running.
- 6" diameter.



LOW DENSITY ABRASVIE DISC, SUEVIA

- Punched steel disc.
- 2-3 mm graining, low density.
- Long service life.
- Suited for angle grinding machine usual in trade.
- 4.5" diameter.



HOOVES PICK

#100-6300 : Sturdy metal, ideal for scraping and cleaning between hooves.
 Quality plastic handle for a secure grip

CERTOPLAST INSULATING TAPE

#300.0270 : Strong adhesion thanks to glue impregnated on a rubber surface.
 Breathable, ideal for hoof and claw bandages

USEFUL INFO : A disc with dispersed grain prevents clogging and fouling, allowing longer uninterrupted use when trimming. Tight-grained discs are more suitable for hard, dry hooves.



#300.0301

#300.0306

HOEVES TREATMENT SETS, SUEVIA

- Complete care package to treat infected or damaged hooves and rapidly improve healing time. The animal quickly gets used to the wooden soles.
- High-quality products. Excellent value for money.
- Resin is non-toxic and safe for the skin.
- Package includes : the powder, the liquid, wooden claw blocks, wooden spatulas, 1 mixing cup and dosing spoon.

#300.0301 : For 25 to 35 treatments

#300.0306 : For 10 to 14 treatments



#300.0254

#300.0256

#300.0257

#300.0259

WOODEN BLOCKS, SUEVIA

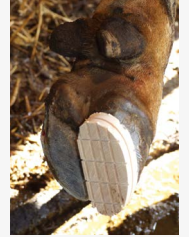
- Made of wood with grooves from 1 to 3 mm deep.
- Installs with Gew-Fit glue on a diseased hoof, allowing the cow to walk easily. Can be used on both sides.

#300.0254 : Standard right block

#300.0256 : Wedge sole

#300.0257 : Large right block

#300.0259 : Large wedge sole



2" AND 4" SELF-ADHESIVE BANDAGES, CO-FLEX

- Lightweight and comfortable, these flexible and elastic bandages provide superior protection and grip. Also provide compression without cutting off circulation. Easy on and off. Water and sweat resistant.

#183-671 (2") and #183-771 (4") : Red

#183-673 (2") and #183-773 (4") : Blue

#183-674 (2") and #183-774 (4") : Turquoise

#183-675 (2") and #183-775 (4") : Green

#183-679 (2") and #183-779 (4") : Black

#183-683 (2") and #183-783 (4") : White

#183-685 (2") and #183-785 (4") : Purple

#183-695 : Box of 36 assorted colors 2"

#183-795 : Box of 18 assorted colors 4"



CLEANING BATHS, SUEVIA

- Cleaning baths made of high-density and UV-resistant polyethylene.
- The honeycomb pattern allows the hooves to be spread apart as they pass through for better disinfection and prevents the animal from slipping.

#160.0160 : Dimensions of 79" long x 35" wide x 6" high. 200 liters capacity

#160.0161 : Dimensions of 110" long x 35" wide x 6" high. 280 liters capacity

#160.0160

#160.0161



CLEANING BATH, AGRI-PLASTICS

- Cleaning bath made of durable polypropylene plastic.
- The pattern prevents the animal from slipping.
- 151 liters capacity.
- Dimensions : 78" long x 32" wide x 6" high.

#AGRI-1005



ROBUST NYLON MARKING NECK STRAPS, SUEVIA

- Dimensions : 1.5" wide x 47" long.
- #300.0465 : Roller buckle
- #300.0466 : Oval ring buckle
- #300.0464 : Clip fastener

NYLON AND LEATHER ADJUSTABLE NECK STRAP, SUEVIA

- With clip fastener.
- #300.0612 : For calves. 1.5" wide x 39" long
- #300.0613 : For cows. 1.5" wide x 51" long



IDENTIFICATION TAG FOR NECK STRAP, SUEVIA

- Numbered id tag for cattle neck strap.
- Numbers from 0 to 9.
- Sold in pack of 10 units
- Number #300.0490 is for 0, #300-0491 is for 1 and so on. The number #300.0496 is for 6 and 9.



TAGS FOR NECK STRAP

- Made of robust nylon.
- White engraved numbers on both sides.
- We have in stock from 001 to 200.

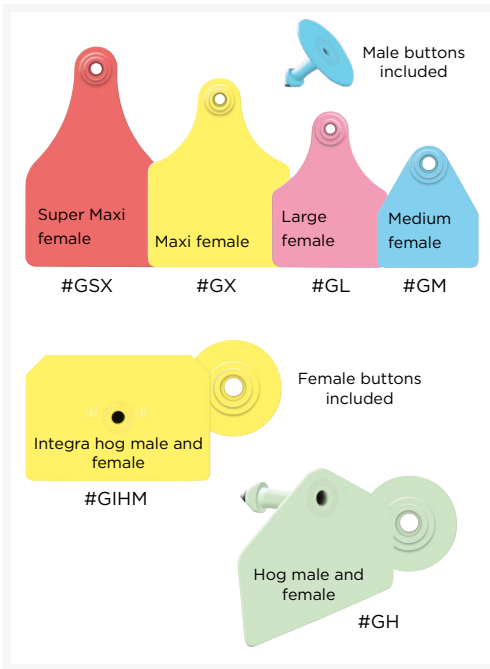
#187-901 : Black color
#187-903 : Blue color
#187-904 : Red color

For large quantities of the same number, please contact us



2-EN-1 PERMANENT MARKING PEN, ALLFLEX

- Comes with two marking tips : fine and broad.
- Easy to use pump action to get the ink flowing.
- Fade resistant ink.
- Specially formulated for use on Allflex ear tags.



EAR TAGS, ALLFLEX

- Identification tags made of quality plastic.
- Specially designed for maximum animal safety and comfort.
- Easy application with Allflex taggers.
- Sold in pack of 25 units.
- Marking available on special order (extra fees).
- Male and female buttons are included with all tags.
- Male and female buttons can be purchased as replacement parts.

The **Super Maxi** size is for cows.
 The **Maxi et Large** size is for cows and calves.
 The **Medium** size is for calves.

- #GSX : Super Maxi female kit for cattle
- #GX : Maxi female kit for cattle
- #GL : Large female kit for cattle
- #GM : Medium female kit for cattle
- #GIHM : Integra hog male kit
- #GH : Global hog male kit



TAGGERS FOR EAR TAGS, ALLFLEX

- #044-001 : Model **TOTAL TAGGER**.
- The grip is designed to ease hand fatigue.
 - Deep jaws make proper placement easier.
 - Replacement applicator pin located in the handle.
- #044-009 : Model **RETRACTOMATIC**.
- Excellent for tagging calves, sheep, goats and pigs.
 - Retracts the pin out of the ear before the animal can react.
 - Automatic applicator. Supplied with a replacement pin.



IDENTIFICATION LEG BANDS, SUEVIA

- | | |
|-----------------------------|-----------------------------|
| - A 16" long velcro range. | - A 14" long plastic range. |
| - Sold in pack of 10 units. | - Sold by unit. |
| #300.0500-B (Blue) | #300.0506-B (Blue) |
| #300.0501-R (Red) | #300.0507-R (Red) |
| #300.0502-O (Orange) | #300.0508-O (Orange) |
| #300.0503-Y (Yellow) | #300.0509-Y (Yellow) |
| #300.0504-G (Green) | #300.0510-G (Green) |



CATTLE MARKING SPRAY, RAIDEX

- Provides intense color marking.
- Fast-drying once applied.
- The marking is visible on pigs for an average of two weeks, and on cattle somewhat longer.
- Cans contain 400 ml.



CATTLE MARKING STICKS, RAIDEX

- Crayons based on special waxes and paraffin oil.
- High-quality pigments to achieve an excellent color intensity.
- Good writing quality on animals' coats. For short-term marking.
- The ingredients are harmless for animal's health.

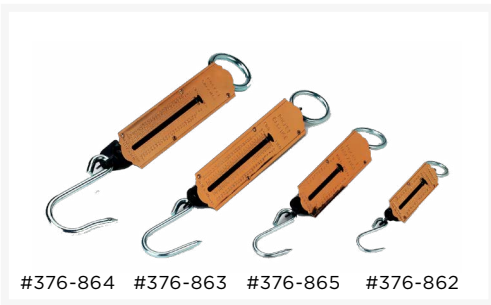
- #082-325 : Red
- #082-326 : Black
- #082-327 : Blue
- #082-328 : Green
- #082-329 : Yellow
- #082-330 : Orange
- #082-331 : Purple



#AGRI-7026

IDENTIFICATION LABELS, AGRI-PLASTICS

- Roll of labels to identify your hutches or any other objects at the farm.
- Easy to write with pen or felt-tip pen.
- 250 labels per roll.



#376-864 #376-863 #376-865 #376-862

SPRING SCALES FOR ALL TYPES OF ANIMALS

- For fast animal control and weighing.
- With suspension ring and sturdy hook.
- To weight different animals according the weight.

- #376-862 : Up to 22 lbs
- #376-865 : Up to 55 lbs
- #376-863 : Up to 110 lbs
- #376-864 : Up to 210 lbs



HANGING SCALES FOR ALL TYPES OF ANIMALS

- Direct-reading dial with black lettering on a white background for improved readability.
- Red indicator hand.
- Transparent and unbreakable plastic dial cover.

- #376-946 : Up to 55 lbs
- #376-947 : Up to 110 lbs
- #376-948 : Up to 220 lbs
- #376-949 : Up to 550 lbs



SCAN THIS QR CODE TO ACCESS OUR AGRICLÉ YOUTUBE CHANNEL.

YOU'LL SEE A HOST OF VIDEOS FROM OUR RANGE OF SUPPLIES AS WELL AS OUR WATERERS, FEEDERS, MATS AND HUTCHES :

- PRODUCT PRESENTATIONS
- PRO ADVICES
- PRODUCTS LIVE ON FARMS
- INSTALLATIONS



ROLL OF ROPE FOR TAIL HOLDERS, SUEVIA

- The roll has a length of 328'.
- Quality elastic rope. The elasticity of the rope does not restrict the cow's movements.

COMPLETE TAIL HOLDERS FOR COWS, SUEVIA

- #300.0177 : With perlon rope, rubber and metal parts
- #300.0185 : With elastic rope, rubber and metal parts

Spare parts

- #300.0178 : Grey rubber to put around tail
- #300.0183 : Black rubber to put around a post
- #300.0179 : Metal part to match the grey rubber
- #300.0182 : Metal part to match the black rubber



CATTLE TIES, SUEVIA

- Metal chain with carabiner and hook.
- Plastic-covered to avoid injuring the animal.

- #300.0579 : 20" long
- #300.0580 : 27.5" long
- #300.0462 : 35" long
- #300.0463 : 55" long



SORTING PANELS FOR PIGS, SUEVIA

- Made of heavy-duty plastic.
- Sturdy, they are ideal for moving pigs at the farm.

- #300.0484 : Standard model of 37" x 30"
- #300.0487 : Large model of 49" x 30"

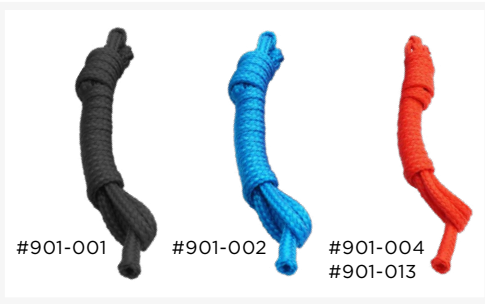


CANES AND PADDLE

#281-028 : Sturdy plastic cane. Ideal for gently moving animals forward. 38" long.

#176-702 : Quality wood cane. Ideal for gently moving animals forward. 38" long.

#300.0499 : Rattle paddle for gentle animal guidance. 42" long. Small pellets inside the paddle make noise and facilitate movement. Animal-friendly alternative to electric prods.



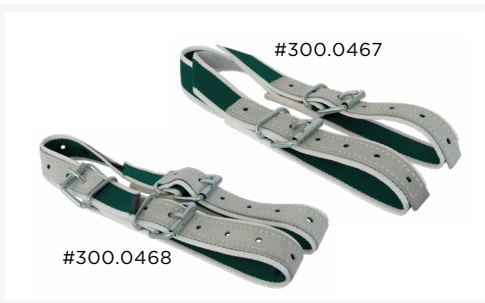
QUALITY BRAIDED NYLON HALTERS

- They are durables, robusts and adjustables.
 - The tips are not burnt for greater comfort
- The model for the cow makes 9' long x Ø 1/2".**
 #901-001 : Black
 #901-002 : Blue
 #901-004 : Red
- The model for the calf makes 7' long x Ø 3/4".**
 #901-013 : Red



ADJUSTABLE HALTERS WITH V-HOOK

- Swivel attachment allowing each of the two cables to be attached to opposite sides of the stall.
 - Allows freedom of movement for the animal.
- #901-020 : Black
 #901-024 : Black and white



LEGS COW SHACKLES, SUEVIA

- Made of premium quality nylon with leather reinforcement.
 - Ideal for ensuring the cow's walking stability if she is injured or after a difficult calving.
 - Stainless steel buckles.
- #300-0467 : Basic shackle
 #300-0468 : Shackle with adjustment in the middle



ANTI-KICK BAR, SUEVIA

- Made of extremely robust galvanized metal (the galvanizing process consists of applying a thin layer of zinc to the metal to protect it from corrosion).
- Prevents cows from kicking when handled by a person.



COW LIFTS

- An indispensable tool for cows that cannot get back on their feet after an injury or a complicated calving. It's a wise investment that pays quickly.
- #376-109 : Rubber clamps can be adjusted to the animal's size with the crank. Adjustable for small to medium breed. Can lift up to 900 kg
 #376-110 : For large animals. Can lift up to 1 500 kg



MULTIPURPOSE FLEXIBLE BUCKET, SUEVIA

- Made of a premium quality plastic.
- Robust and durable.
- Ideal to transport feed, grains or any other kind of food.
- Perfect to pick up fruits, vegetables, herbs, etc.
- 17 liters capacity.



#300.0664



#300.0044



#300.0040, 300.0045
300.0046, 300.0532



#300.0038



#300.0043

CHOICE OF MULTIPURPOSE BUCKETS, SUEVIA

- Extremely robust with metal handle.
- Quantity indicator graduated in liters.
- Cadmium and lead-free and acid-resistant.

#300.0044 : 5 liters capacity

#300.0532 : 7 liters capacity

#300.0040 : 12 liters capacity

#300.0045 : 15 liters capacity

#300.0046 : 20 liters capacity

#300.0038 : Black economic model. 12 liters capacity

#300.0043 : Square model. 10 liters capacity

#300.0050 : Lid for bucket 300.0040

#300.0051 : Lid for bucket 300.0045

#300.0052 : Lid for bucket 300.0044



FOOTBATH FOR WORKERS, SUEVIA

- Ideal for preventing the proliferation of germs and bacteria in buildings.
- High-quality polyethylene.
- Chemicals-resistant.
- Anti-slip.
- Dimensions : 32" x 24" x 4".

#160.1086



FOOTBATH FOR WORKERS, AGRI-PLASTICS

- Ideal for placing in front of entrance doors.
- Made of sturdy plastic.
- Anti-slip.
- Dimensions : 26" x 18" x 4".

#AGRI-1030

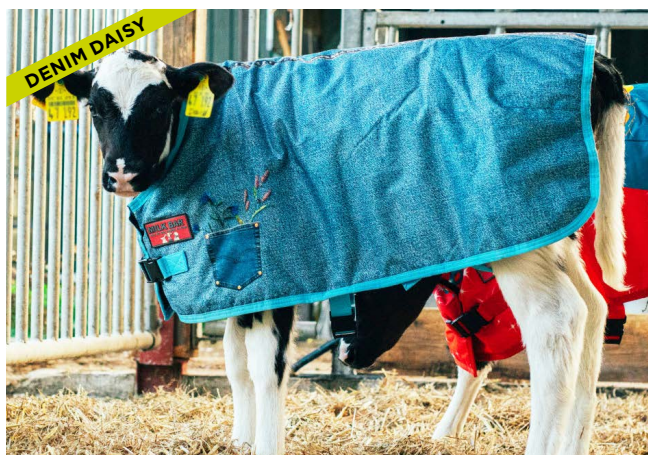


#202-080-100
#202-080-250

FLEXIBLE CONNECTION HOSES

- Reinforced with Flexten cord for superior quality.
- Treated for chemical products.
- 1/2" diameter.
- Pressure of 600 PSI.

#202-080-100 : 100 feet long
#202-080-250 : 250 feet long



MILK BAR CALF BLANKETS



Using a blanket helps keep the calf warm. When temperatures begin to fall below 10° C, a young calf start to feel cold and burn energy to maintain body temperature. It is therefore recommended to wear the blanket during the first months of the animal's life, so that it keeps it's energy growing.

- Quilted blanket to protect calves from cool weather.
- Made with a high quality waterproof fabric.
- The rubber layer within the coat is a physical barrier that water cannot penetrate. The rubber membrane has very small holes allowing air to pass through, but are not big enough for water molecules.
- The fabric is breathable to prevent dampness being trapped under the coat.
- With clips and adjustable straps under belly and around back legs.
- Make sure the blanket is fitted close to the body to keep the animal warm.

#MBM-FF-L : Festive Flora model
#MBM-DD-L : Denim Daisy model
#MBM-FF-L : Premium model



#130.5011



#130.5015



#130.5017

#530.5004-SUP



#130.5009

EASYCLEANER AND EASYCLEANER MINI ELECTRIC BRUSHES, SUEVIA

- Frame made in galvanized steel and the brush disc is placed in an inclined position.
- The extensive brushing surface and the rotating brushing movement provide a steady massage of the head and back section as well as big parts of the flanks and offer the cows a maximum cow comfort
- Suitable for animals of different sizes due to inclined mounting. No height adjustment necessary.
- Bristles are made of a very sturdy and special plastic for a long service life.
- Solid, the compact design is ideal for tight spaces.
- Actuation via maintenance-free and heavy-duty gear.
- Easy start of actuation simply by touching the brush by the animal.
- Change direction of bristles rotation each time the brush is operated, ensuring an even use of bristles. The factory-set operating time is approximately two minutes.
- Adjustable resistance reverse mechanism : in case of an overload situation (e.g. : cow's wound up tail), the motor stops automatically and changes direction of rotation.
- For indoor use only. Quick and easy installation.
- The brush can be mounted on a wall or a post.
- Electric motor of 230 V - 50 Hz. Motor power of 370 W.
- Brush speed of 34 rpm/minute.

#130.5011 : suitable for 60 cows

- Dimensions : 33" wide x 31" depth x 38" high
- Weight : 148 lbs

#130.5015 : suitable for 80 calves, goats and pigs

- Dimensions : 24" wide x 27,5" depth x 35,5" high
- Weight : 143 lbs

NEW PRODUCT : EASYCLEANER DUO ELECTRIC BRUSH, SUEVIA

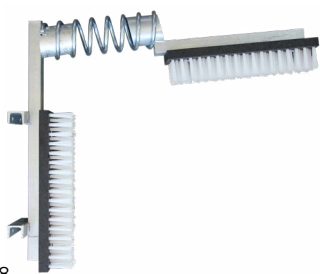
- Anatomically formed brush with bristles made of a very solid and special plastic for long service life.
- Actuation via maintenance-free and heavy-duty gear with gear wheels made of hardened steel.
- Motor protected from water splash and dust.
- Height adjustment range to suit animal size up to approx. 28 cm. Thanks to its pendulum suspension, it adapts to animals of all sizes.
- Easy start of actuation simply by touching the brush by the animal.
- Change direction of bristles rotation each time the brush is operated, ensuring an even use of bristles. The factory-set operating time is approximately two minutes.
- Adjustable resistance reverse mechanism : in case of an overload situation (e.g. : cow's wound up tail), the motor stops automatically and changes direction of rotation.
- The brush is delivered fully assembled and ready to be installed indoor or outdoor, protected from the elements. For outdoor installation, a shelter must be fitted to prevent dirt particles and hair from sticking to the brush in wet conditions.
- Suitable for a maximum of 100 cows. However, in order that every cow has enough time for brushing and wellness, the ideal cow quantity is 60 cows.
- Electric motor of 230 V - 50 Hz. Motor power of 370 W.
- Brush speed of 58 rpm/minute
- Protection : IP54
- Dimensions : 16.5" wide x 42" depth x 47" high. Weight : 317 lbs.

Accessory

#530.5004-SUP : Wall mount plate

WALL-MOUNTED BRUSH, SUEVIA

- The bristles of this scratch brush are made of a very solid and special plastic for long service life.
- Easy mounting on a wall through six holes of Ø 13 mm.
- Quality wooden plate.
- For indoor or outdoor use.
- Suitable for all types of animals (farm, household pets, zoo).
- Dimensions : 35.5" long x 12" wide x 3.5" thick.
- Weight : 13 lbs.



#300.0458

VINK BRUSH WITHOUT MOTOR, SUEVIA

- Particularly robust construction with heavy-duty spring.
- Special long-lasting nylon bristles.
- Horizontal bristles movable into all directions thanks to spring suspension.
- Suitable for all different cattle sizes.

Spare parts

#302.0003 : Replacement brush
#302.0006 : Replacement spring



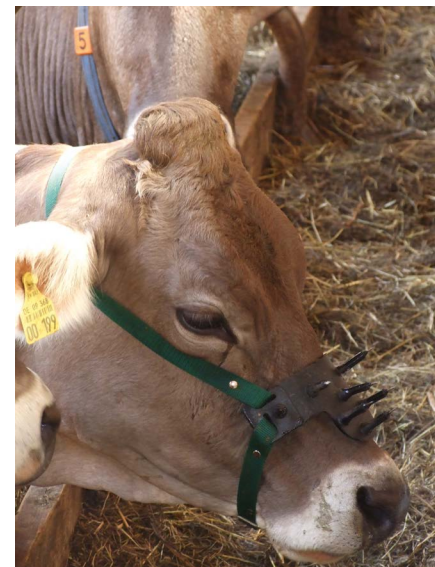
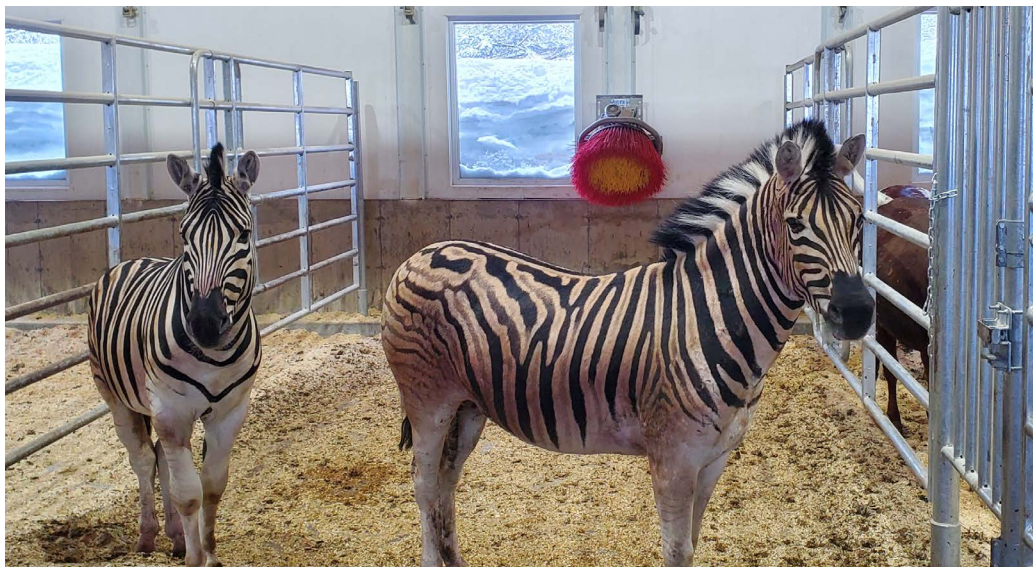
#300.0544

VINK BRUSH WITH DISPENSER, SUEVIA

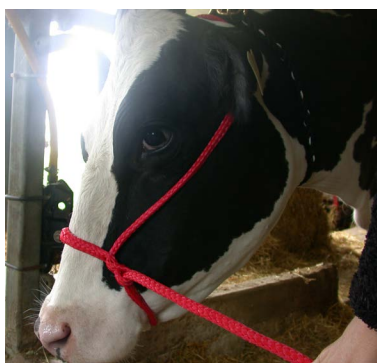
- The brush is supplied with a plastic dispenser.
- A small tube, connected to the dispenser and installed along the top brush, carries the liquid in the holes through brush bristles. When the animal rubs against it, the liquid spreads on its skin.
- The dispenser capacity is 20 liters.

Spare parts

#302.0004 : Replacement brush
#302.0006 : Replacement spring



Anti-sucking rings page 14



Halters page 25



Horse feeders page 8



Sorting panels page 24



TAPIS POUR CAGES DE MISE-BAS DES TRUIES SPLIT SAVER

Design by Agriclé in partnership with Huber Technik, this mat **contains high-quality additives that make it more durable**, even when exposed to ammonia from sow fluids. It arrives ready to use in the pig farm.

With its non-slip surface, the sow has a better grip (prevent the animal from crashing) and, when she stands up or lies down, the risk of crushing piglets is reduced to a minimum.

- Made from new, non-vulcanized tire rubber.
- Mat with holes to allow liquids and feces to pass through.
- Improved comfort and welfare conditions for the sow.
- As the mat doesn't crumble, there are no pieces of rubber falling into the slurry pit and clog the pipes.
- Proven resistance for over 60 farrowings.
- Easy to wash for optimal disinfection.
- One year full warranty.
- Dimensions : 22" wide x 59" long x 3/4" thick.
- Weight : 19 lbs.



IT'S THE IDEAL PRODUCT FOR SOWS WITH LEG PROBLEMS OR TO HELP NERVOUS GILTS!

#SPLITSAVER-22

Puzzle on 4 sides



Puzzle on 2 sides



4 straight sides
Also available in thickness of 1/2" (12 mm)



UTILITY MATS

- Economic rubber mats for different needs and applications.
- Textured anti-slip finish on top and grooved profile on bottom for easy drainage.
- 3-year warranty.
- Dimensions : 48" wide x 72" long
- Thickness : 5/8" (17 mm)

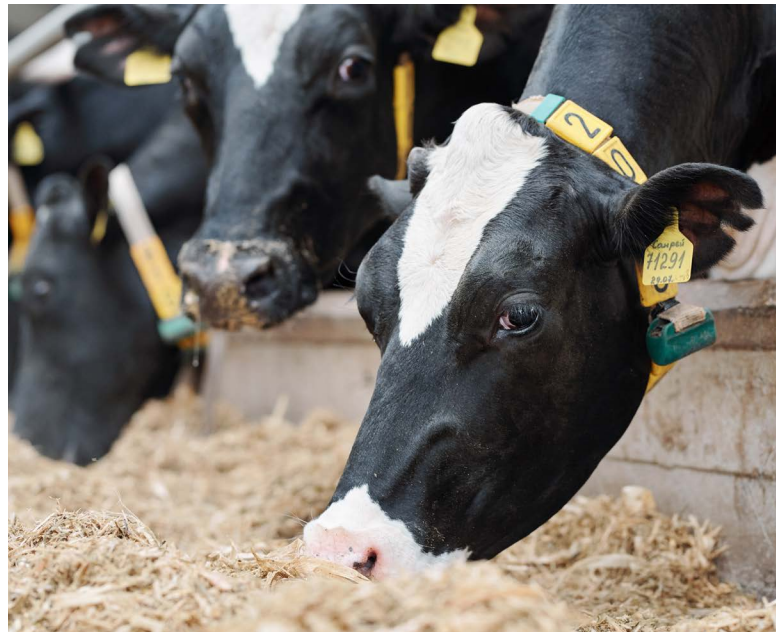
#GXY-3.1FI : Puzzle 4 sides

#GXY-3.1I : Puzzle 2 sides

#GXY-3.1 : 4 straight sides



Flexible bucket page 26



Neck strap id numbers page 21



Shovels page 16

OUR SUEVIA WATERING RANGE

Need reliable and durable waterers? Suevia models have been unbeatable in quality for 100 years. It is also our vision of offering the best, for as long as possible!

- Individual water bowls
- Stainless steel troughs
- Heated waterers
- Thermo troughs
- Pasture waterers



Scan to learn more on Suevia waterers

AGRICLÉ

AN AVENORD DIVISION



450 994-3130

ventes@avenord.com

agricle.com